

**NRC PROJECTS**



**K24**

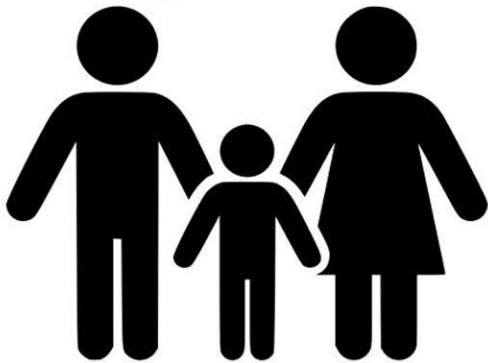


**V1.2**

# **1/24 RC BUGGY USER MANUAL**

[www.nrcprojects.com](http://www.nrcprojects.com)





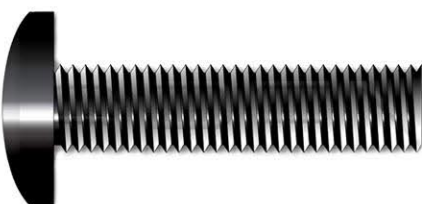
**KEEP AWAY FROM  
CHILDREN, CONTAINS  
SMALL PARTS AND  
CHOKING HAZARDS**



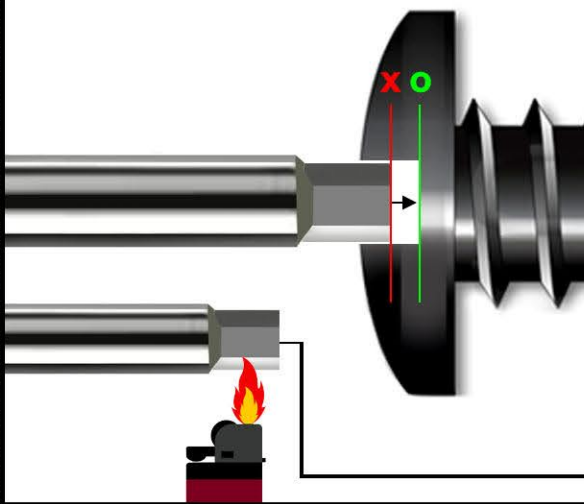
**DO NOT OVER-TIGHTEN!**



**\*SELF TAPPING SCREWS  
FOR PLASTIC PARTS**



**\*MACHINE SCREWS FOR  
ALUMINIUM PARTS**



**\*ENGAGE DRIVER FULLY  
INTO SCREW SOCKET**

**\*HEAT TOOL TIP TO HELP  
ENGAGEMENT INTO SCREW  
SOCKET**





**DRIVERS-**  
**\*1.5MM HEX (x2)**  
**\*0.9MM HEX**

**\*CALIPERS**



**PIN VICE/PIN DRILL**  
**DRILL BITS-**  
**\*1MM**  
**\*1.3MM**  
**\*1.5MM**  
**\*2MM**

**SMALL HOBBY FILE**



**M2 NUT DRIVER-**  
**\*4MM**  
**\*4.5MM (FOR LARGER M2**  
**LOCKNUTS)**

**\*TWEEZERS**



**BODYSHELL REAMER**

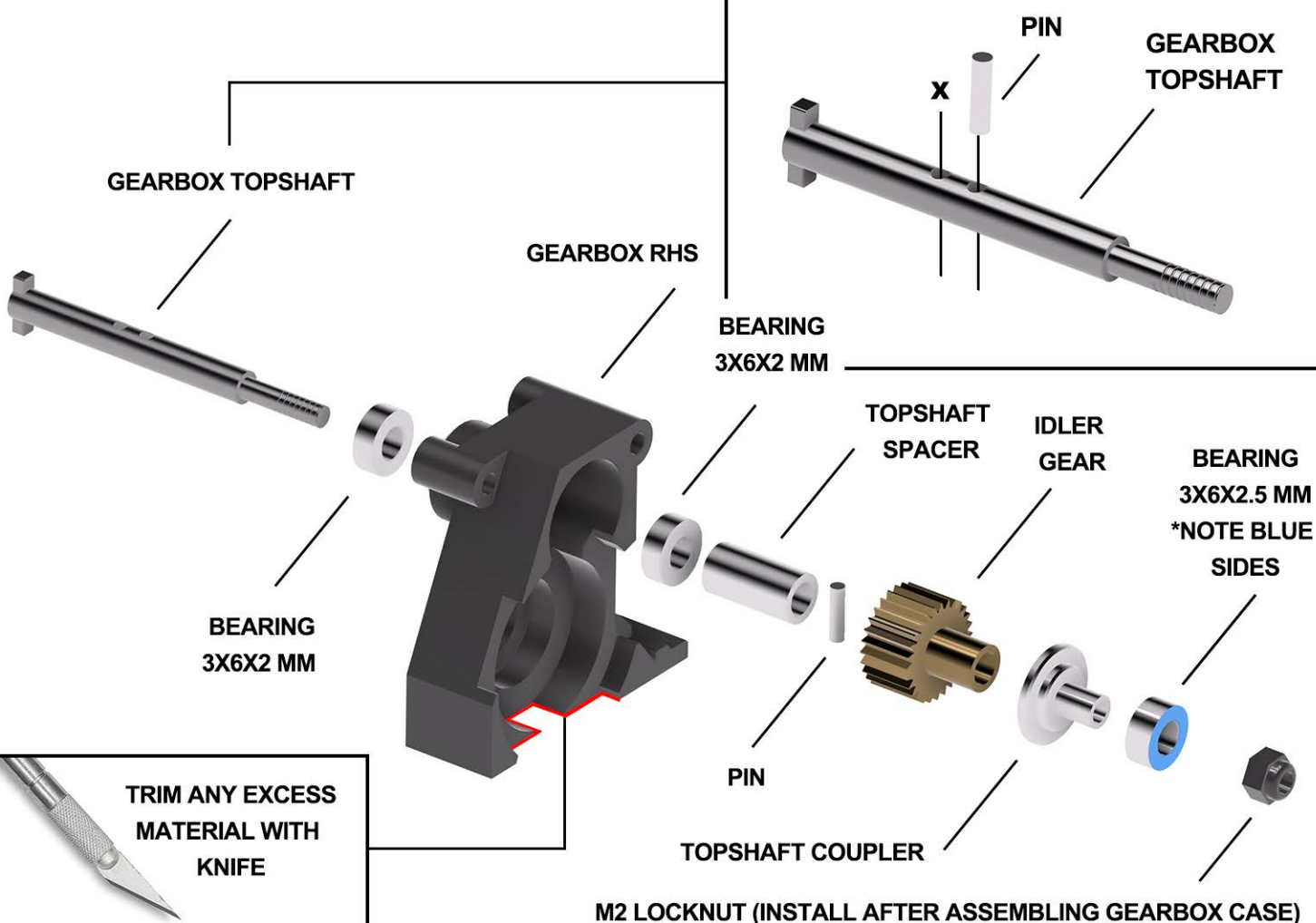
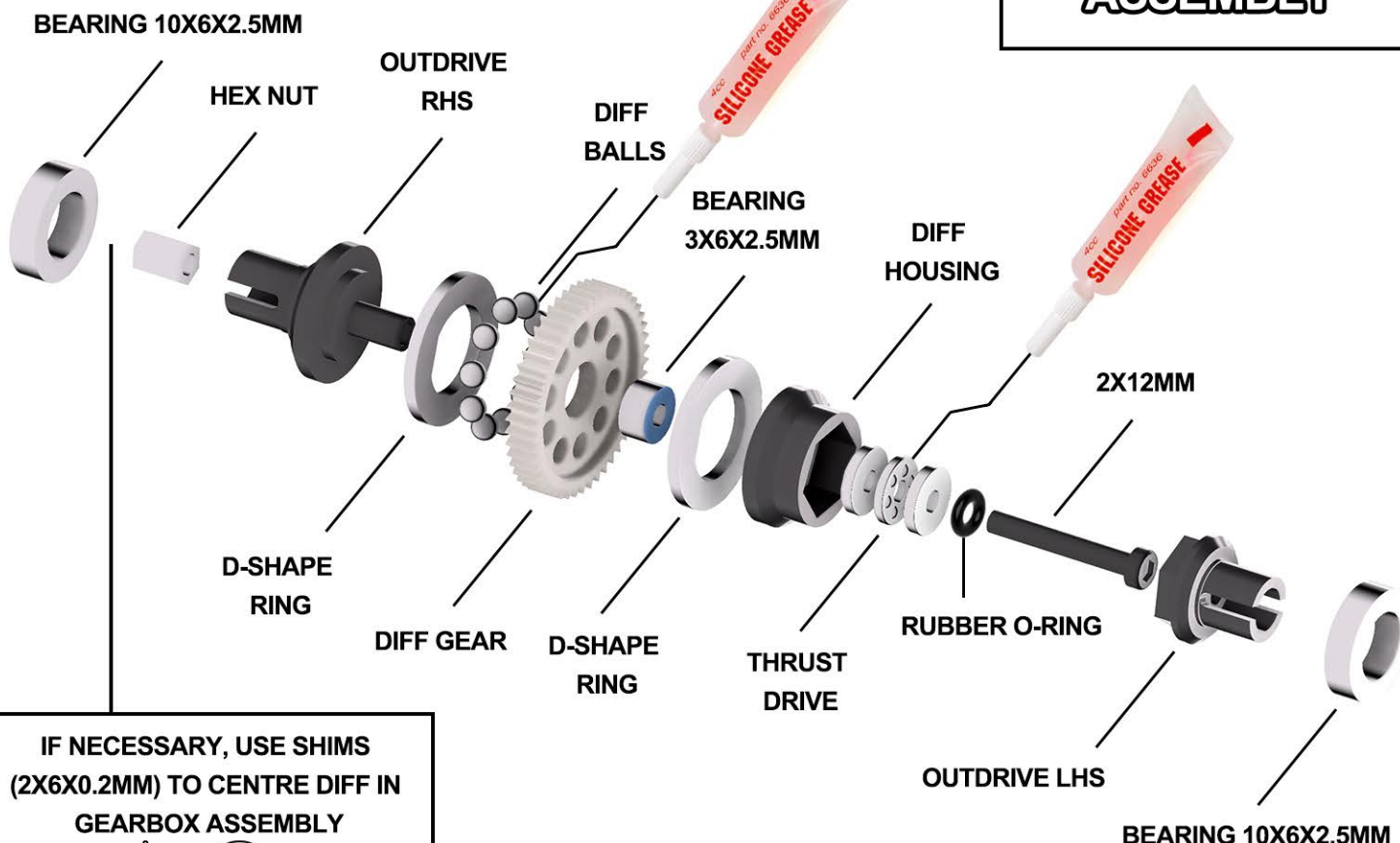
**LEXAN SCISSORS**

**SMALL PLIERS**



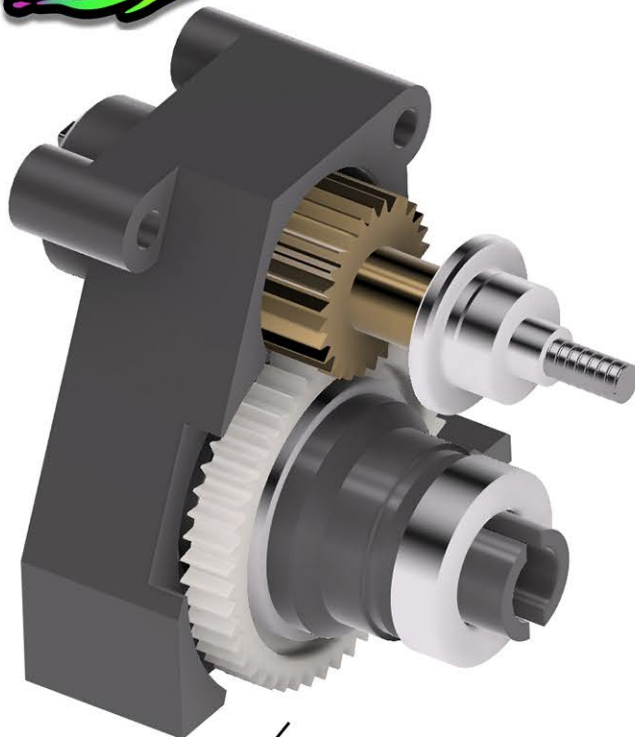
## GEARBOX ASSEMBLY

ADD SILICON GREASE  
TO DIFF BALLS





## GEARBOX ASSEMBLY



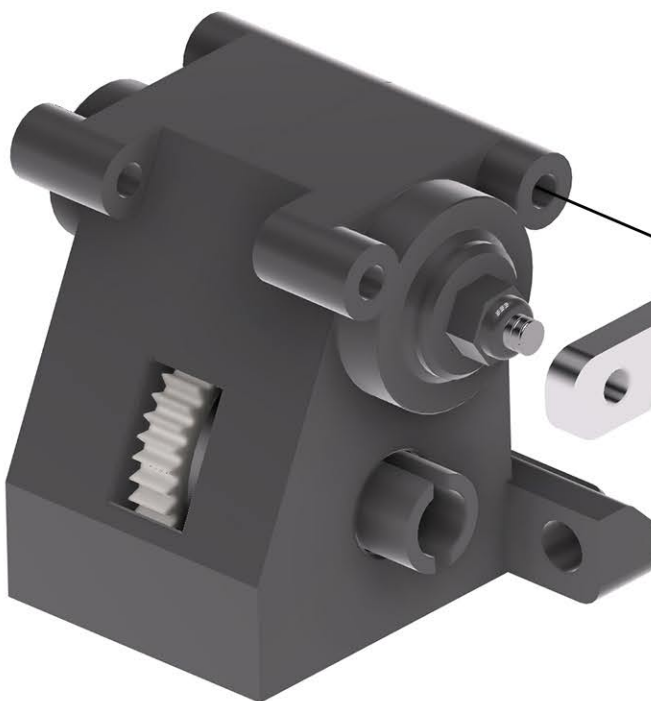
COMPLETE DIFF

GEARBOX LHS

M2 LOCKNUT



TRIM ANY EXCESS  
MATERIAL WITH  
KNIFE

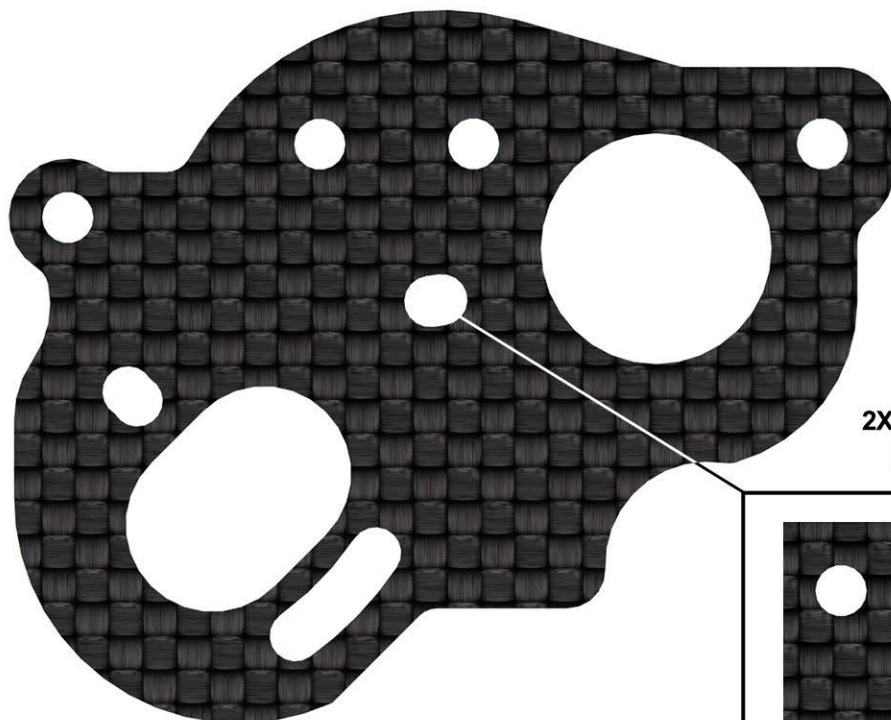


GEARBOX BRACE

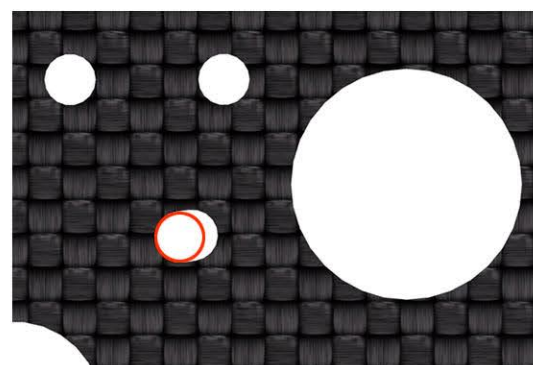
2X30MM



## GEARBOX ASSEMBLY



2X4MM SCREW & SPUR GEAR  
POST TO REAR POSITION



THREAD LOCK



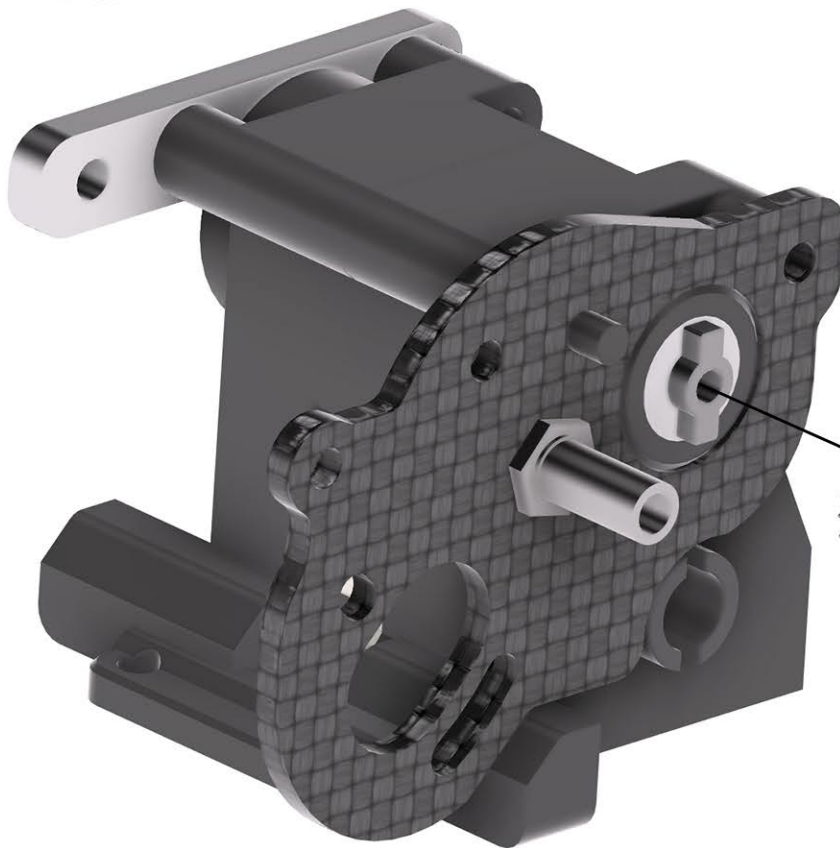
2X4MM



SPUR GEAR POST

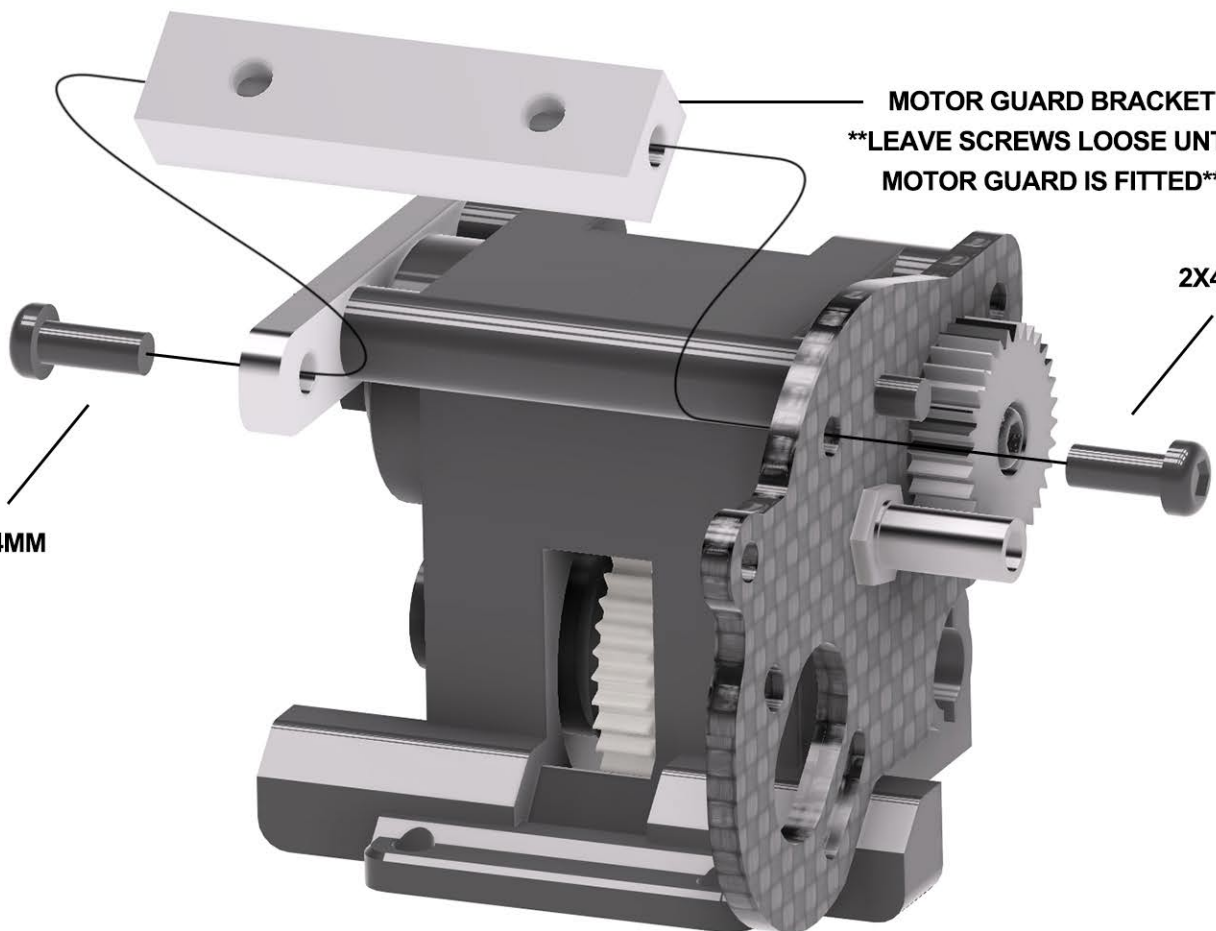


# GEARBOX ASSEMBLY



TOP SHAFT GEAR

1.2X4MM



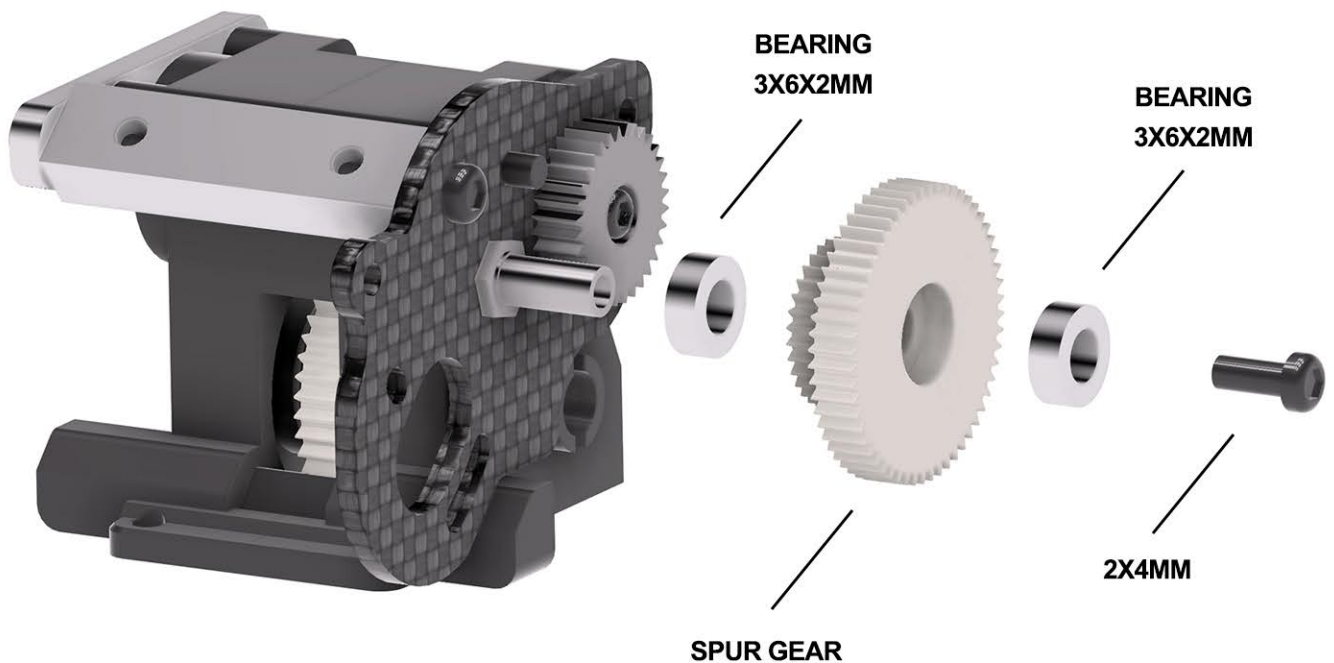
MOTOR GUARD BRACKET

\*\*LEAVE SCREWS LOOSE UNTIL  
MOTOR GUARD IS FITTED\*\*

2X4MM

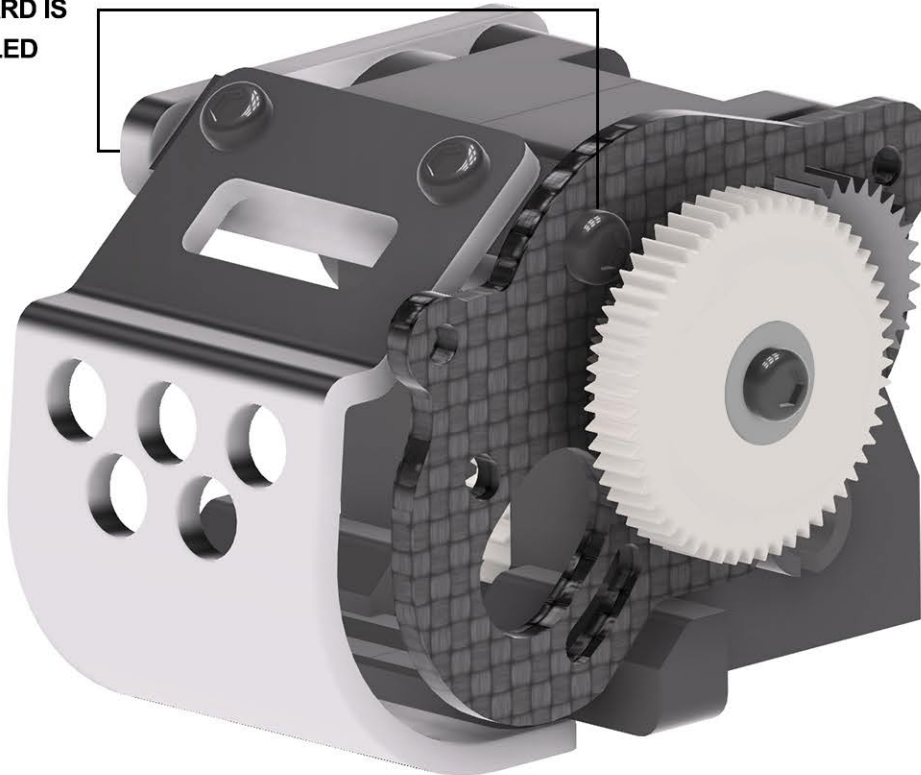
2X4MM





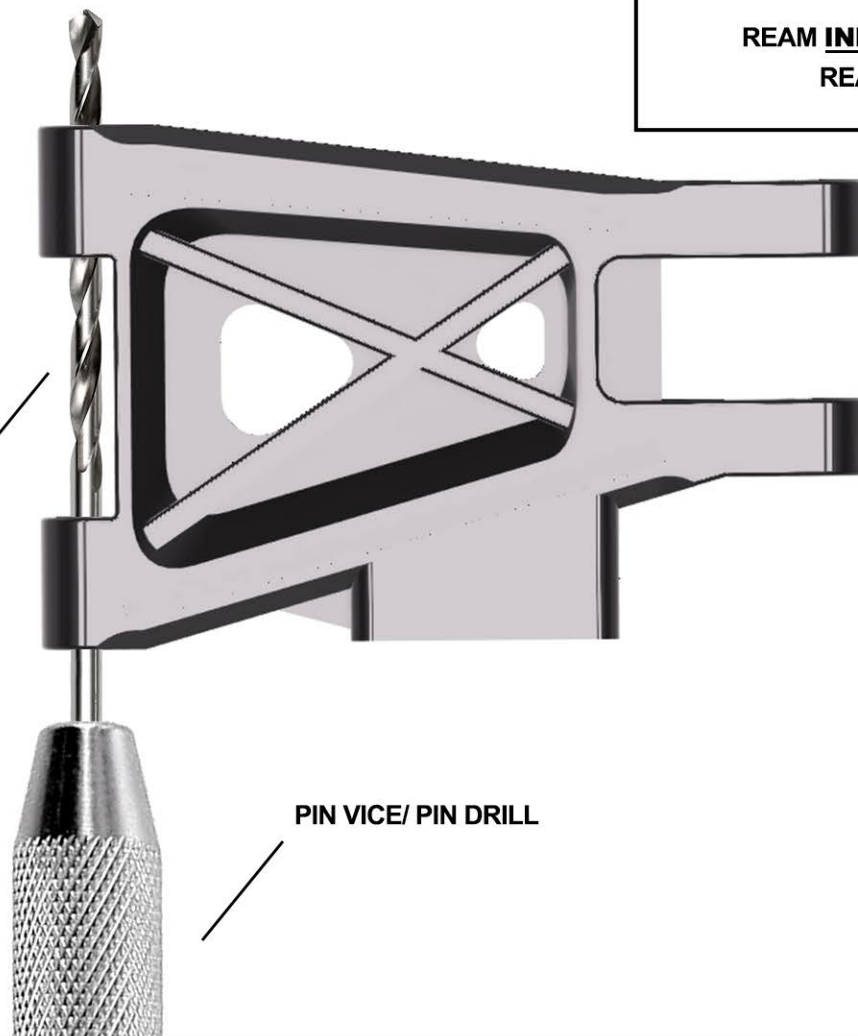


TIGHTEN SCREWS AFTER  
MOTOR GUARD IS  
ASSEMBLED



REAM INNER HOLES OF  
REAR ARMS

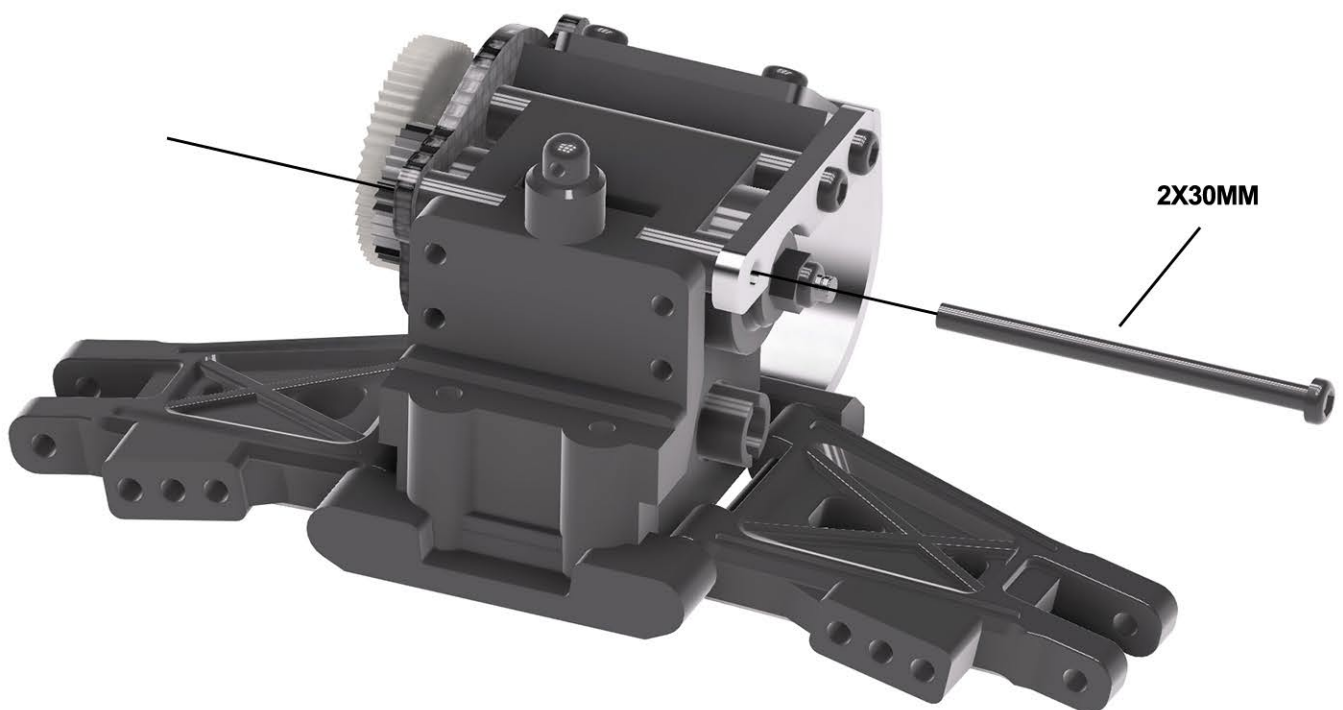
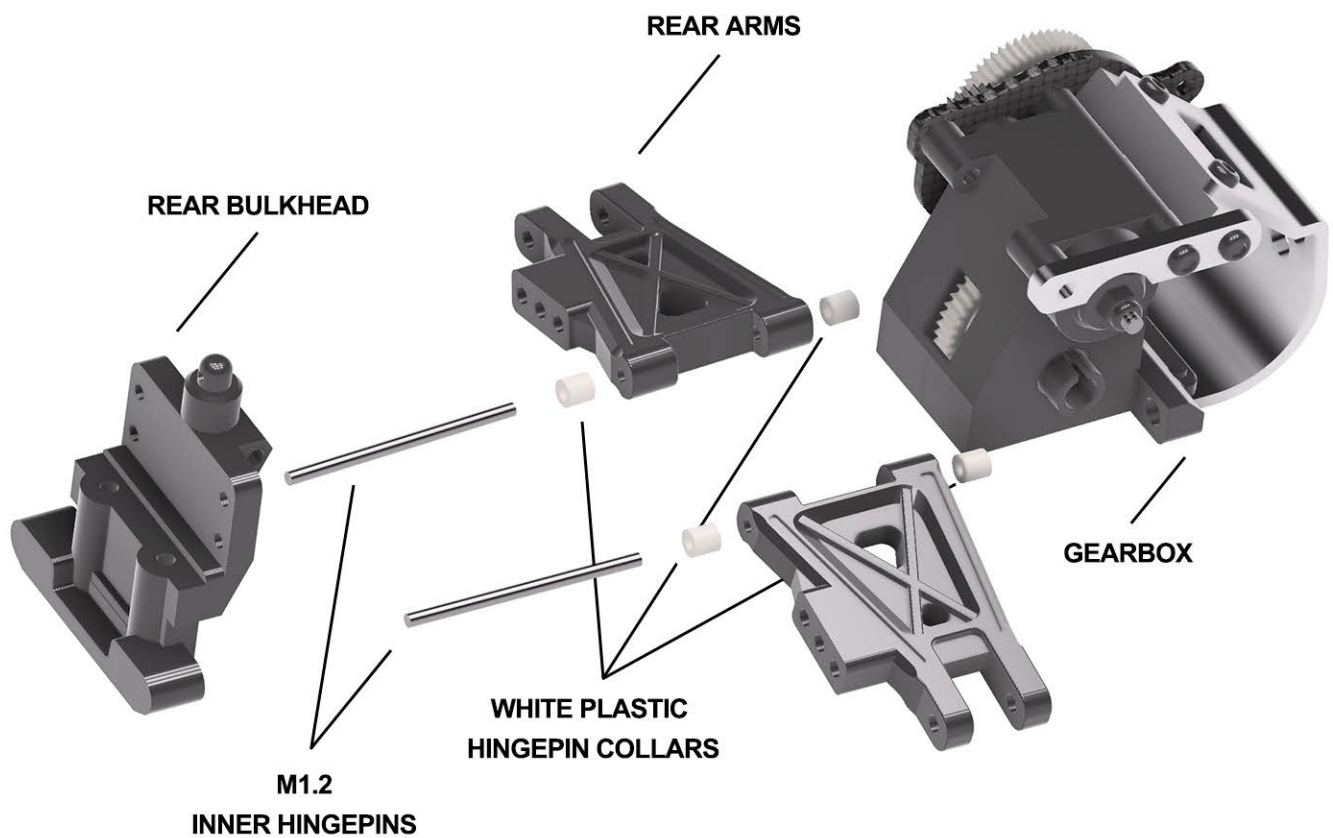
1.3MM DRILL BIT



PIN VICE/ PIN DRILL

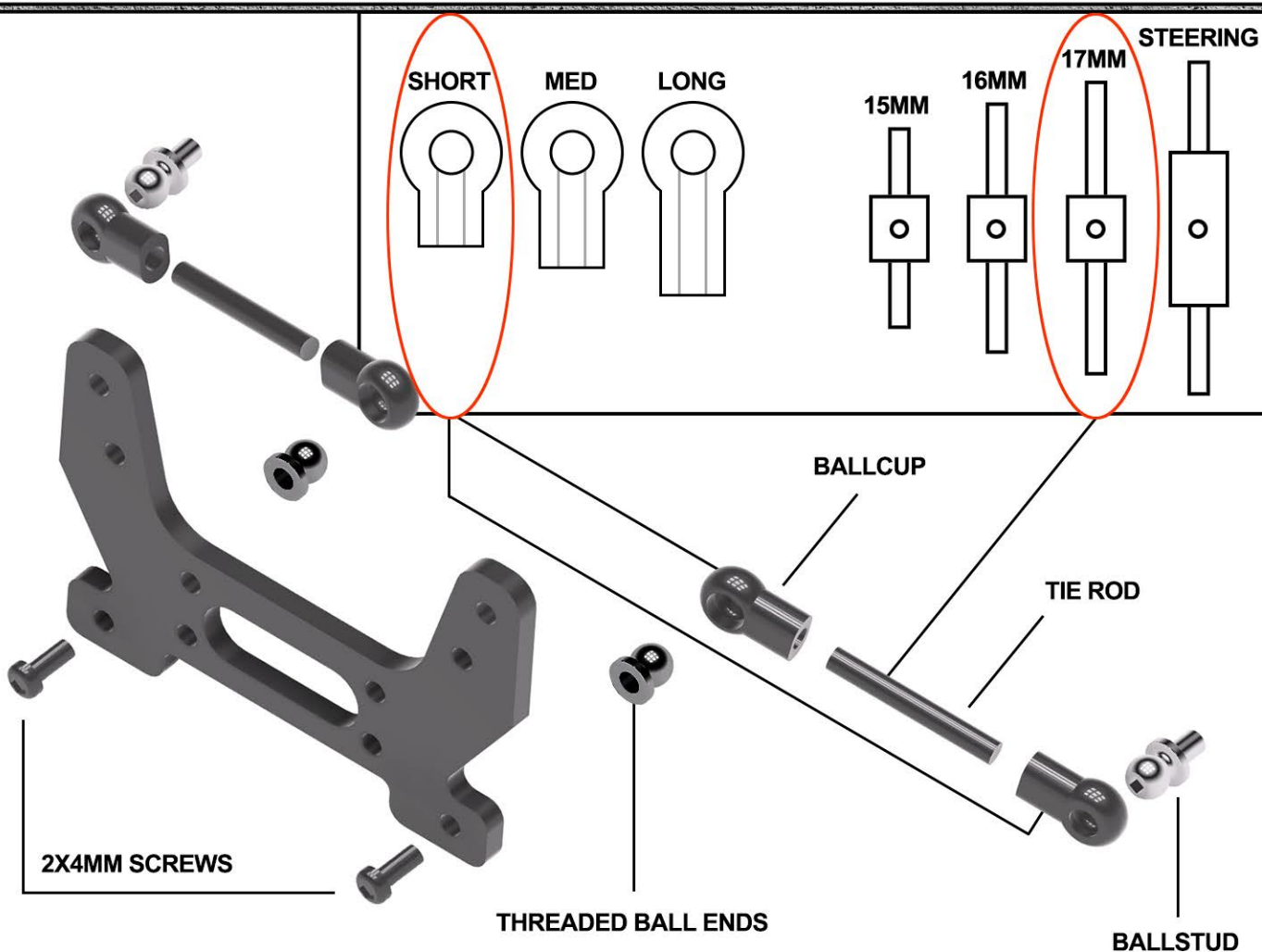
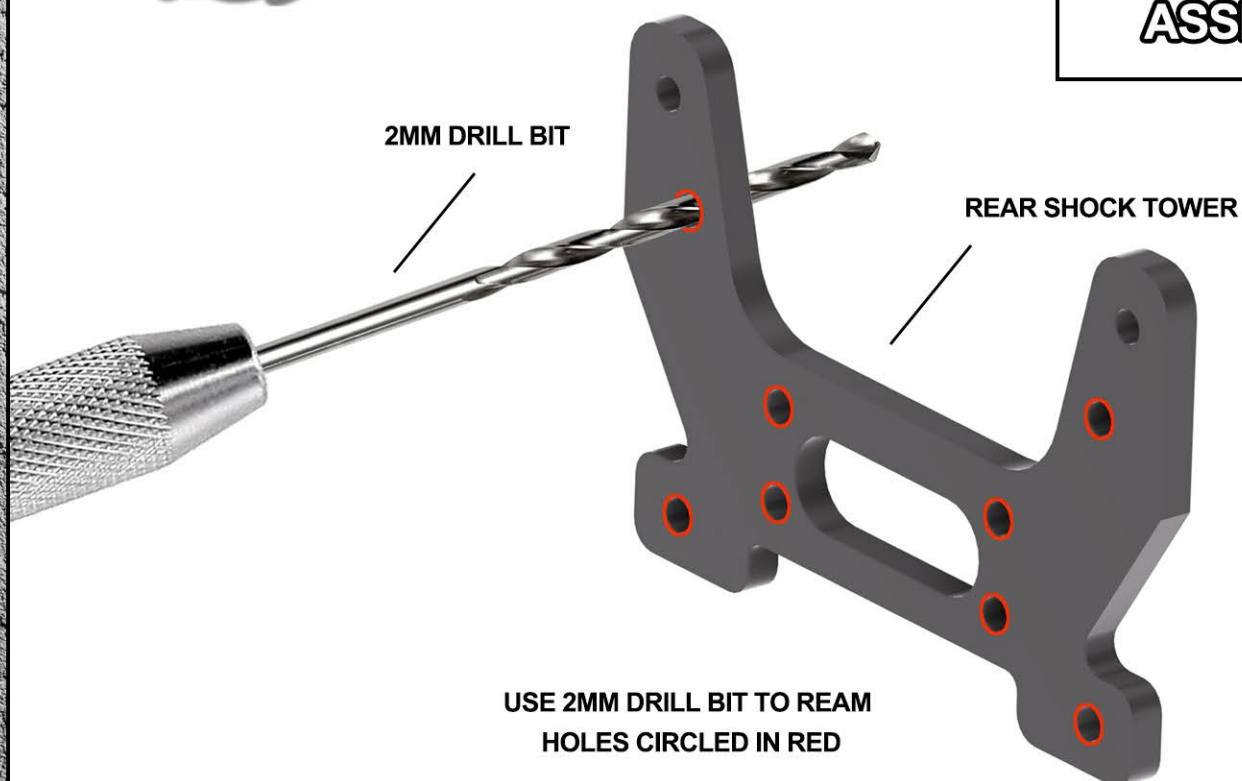


## REAR ASSEMBLY





## REAR ASSEMBLY

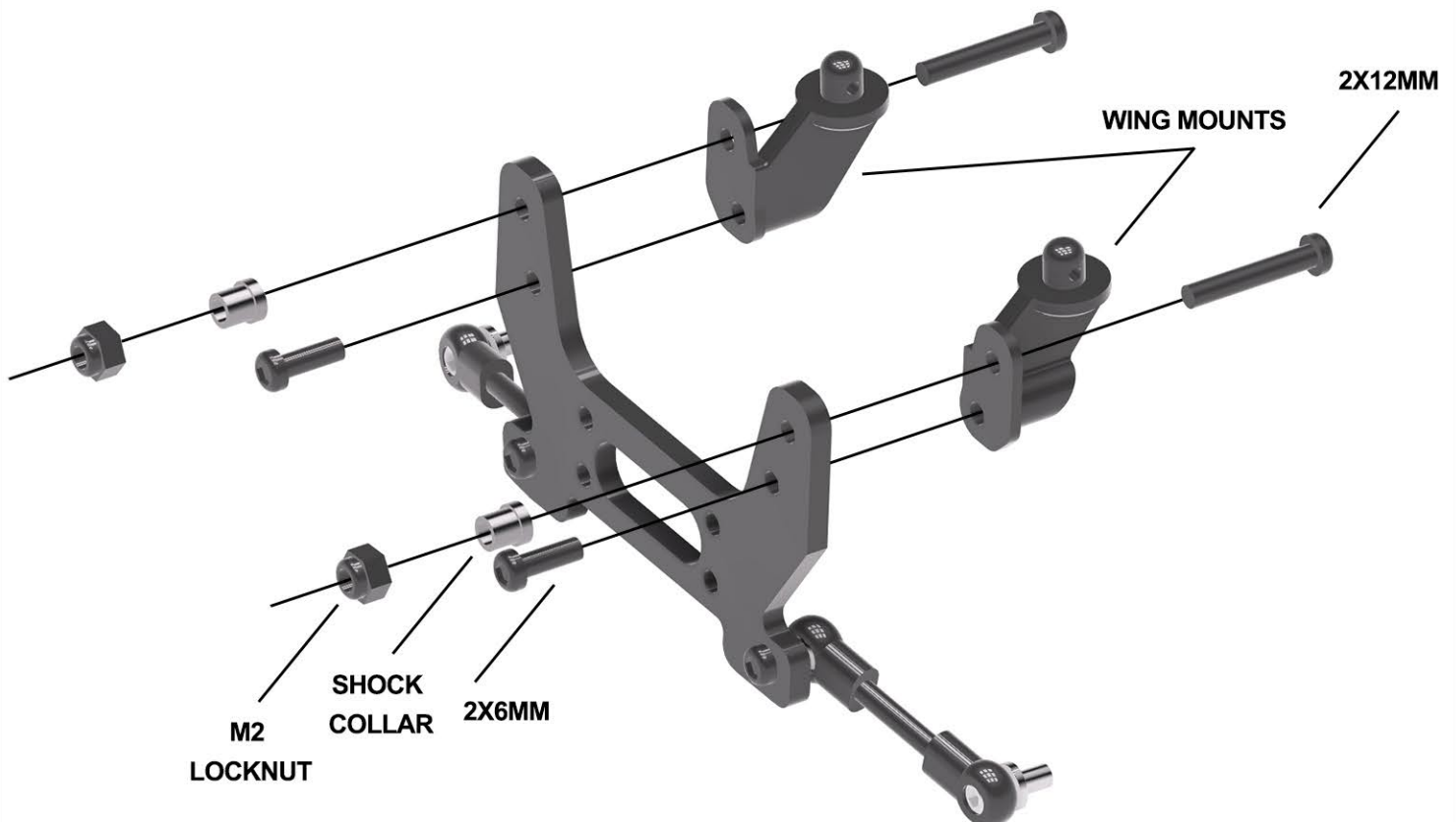
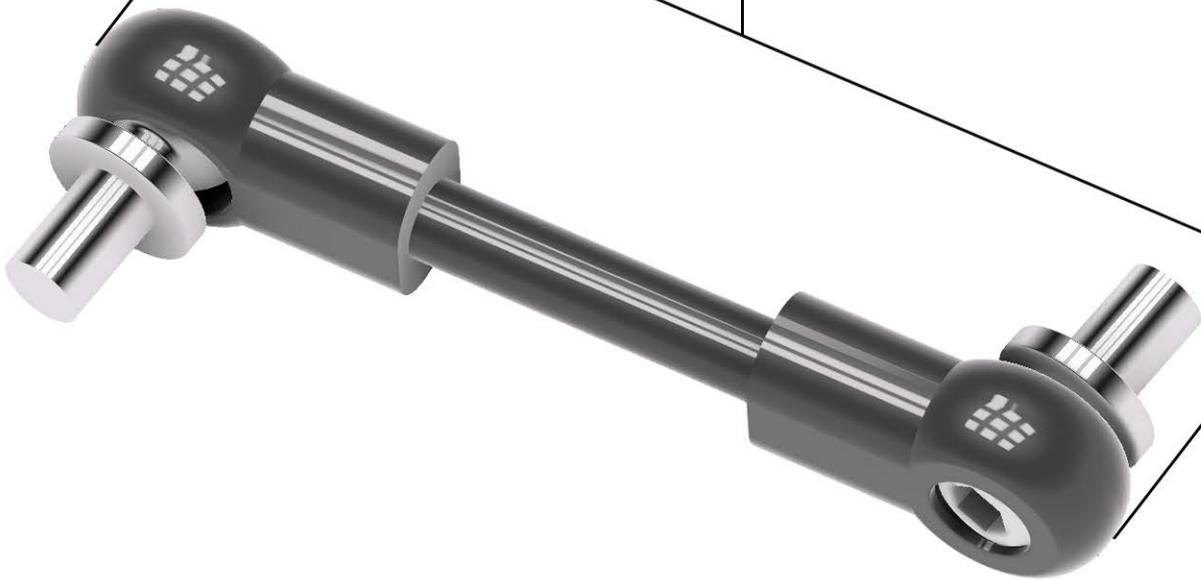




**REAR  
ASSEMBLY**

REAR CAMBER LINK - LENGTH

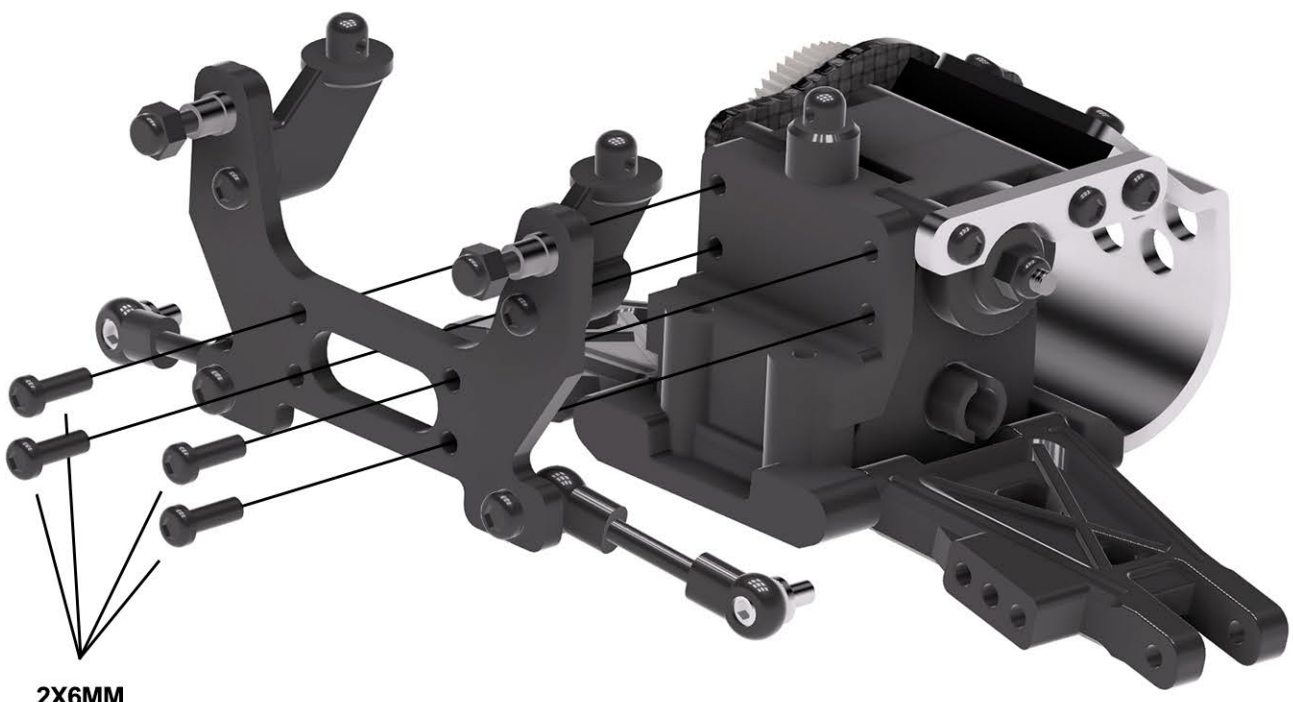
**29.5MM**





**REAR  
ASSEMBLY**

**ASSEMBLED REAR  
SHOCK TOWER**



**2X6MM**

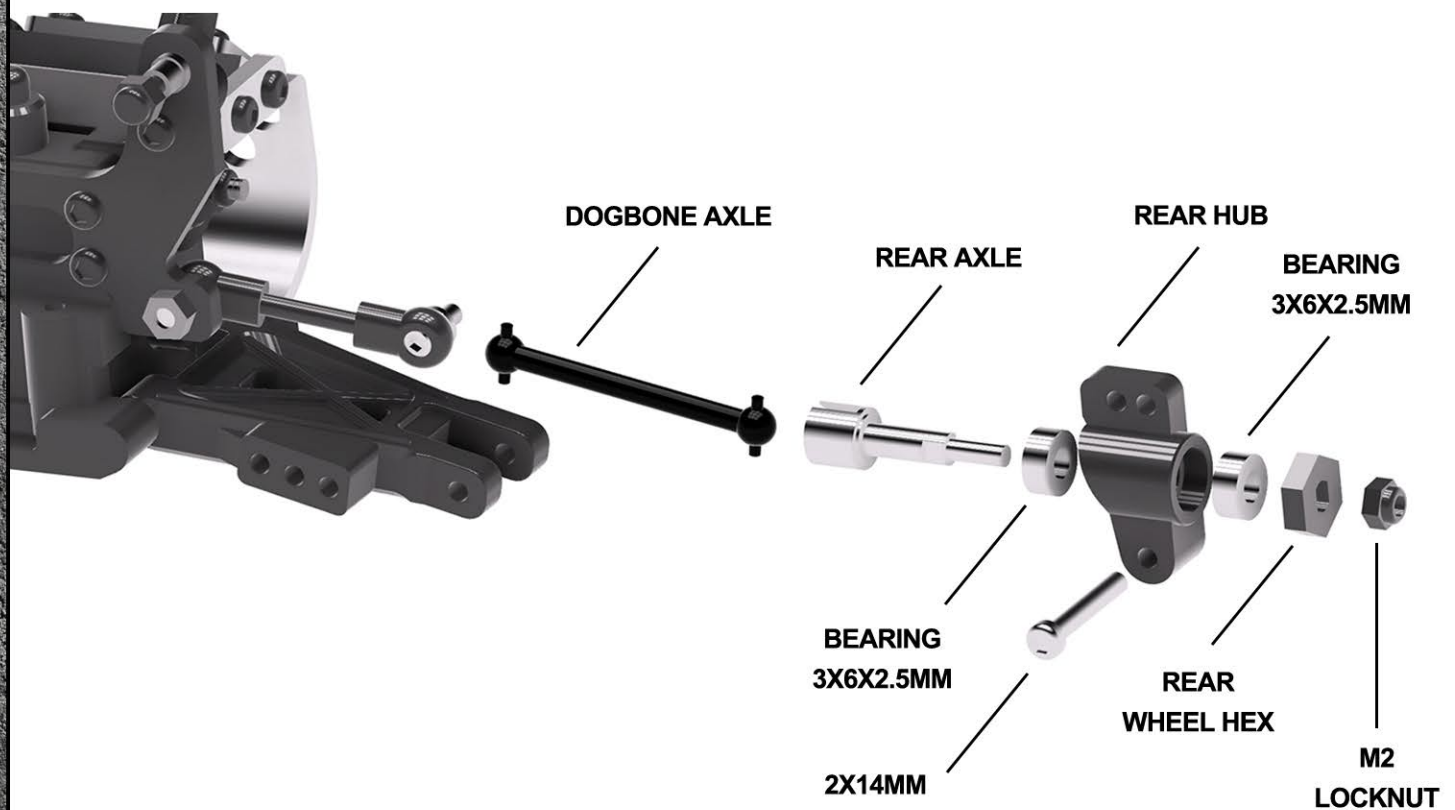


## REAR ASSEMBLY

INSERT 1/2 O-RING  
INTO OUTDRIVE

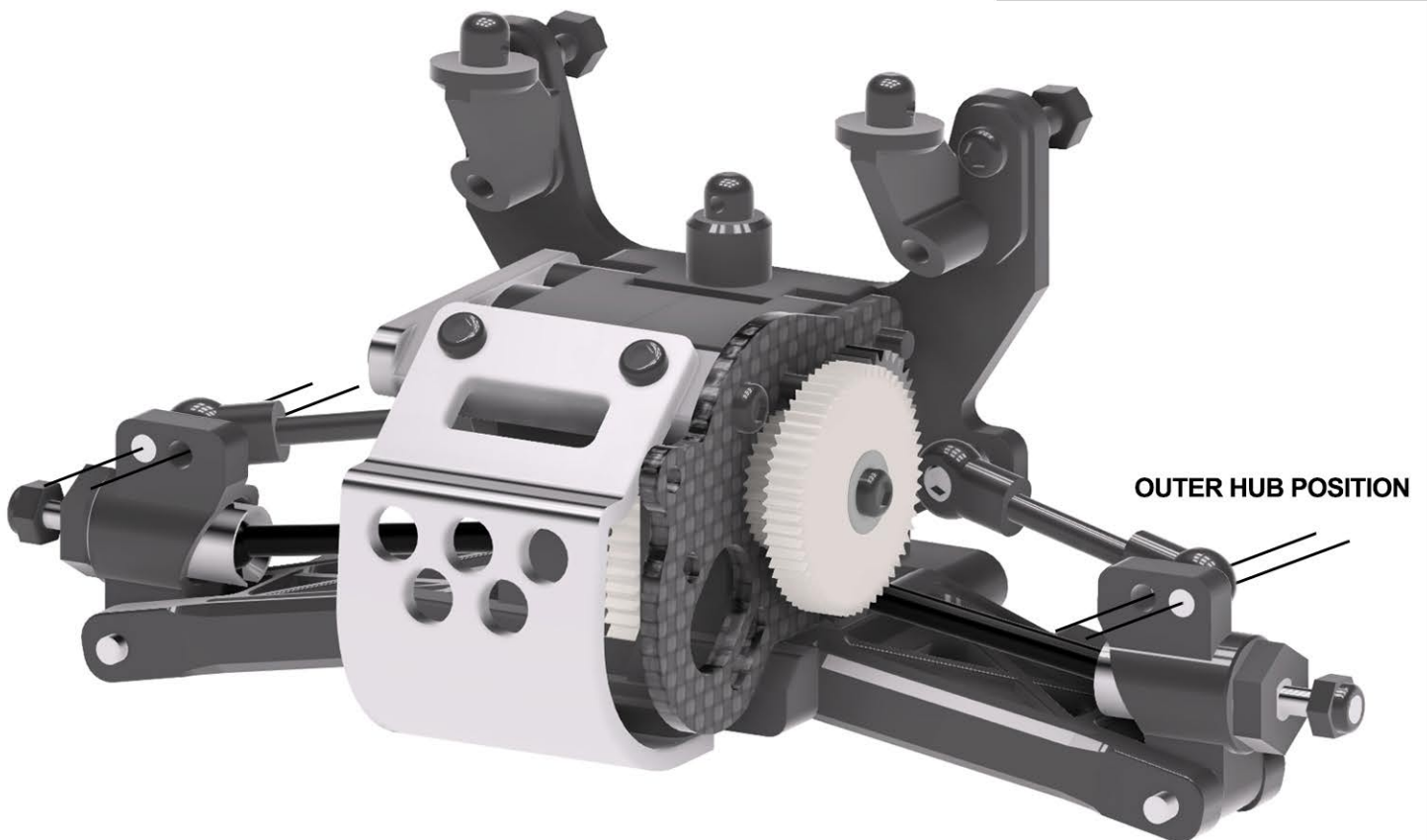
CUT O-RING  
IN HALF

INSERT 1/2 O-RING INTO OUTDRIVE

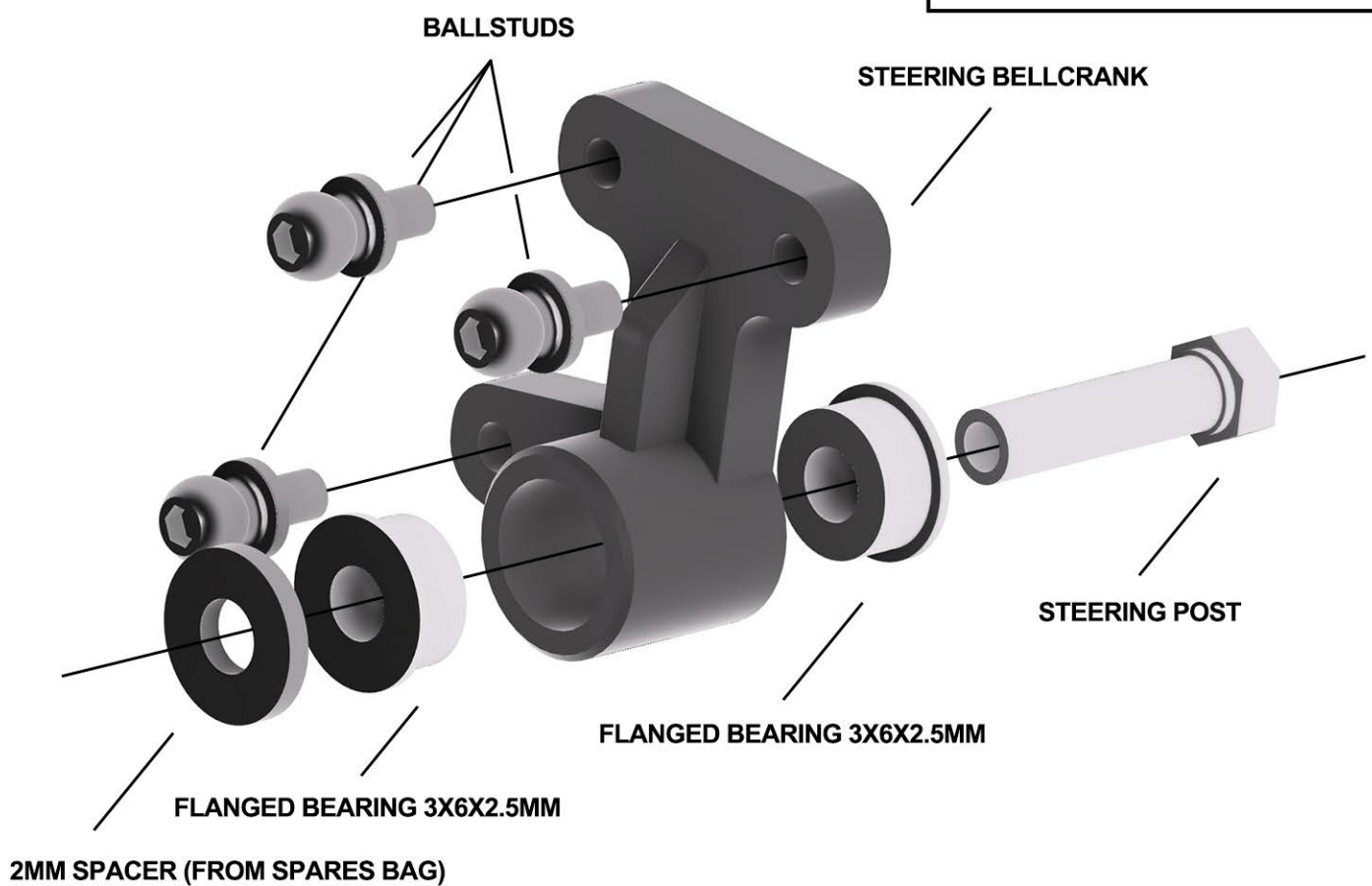




## REAR ASSEMBLY

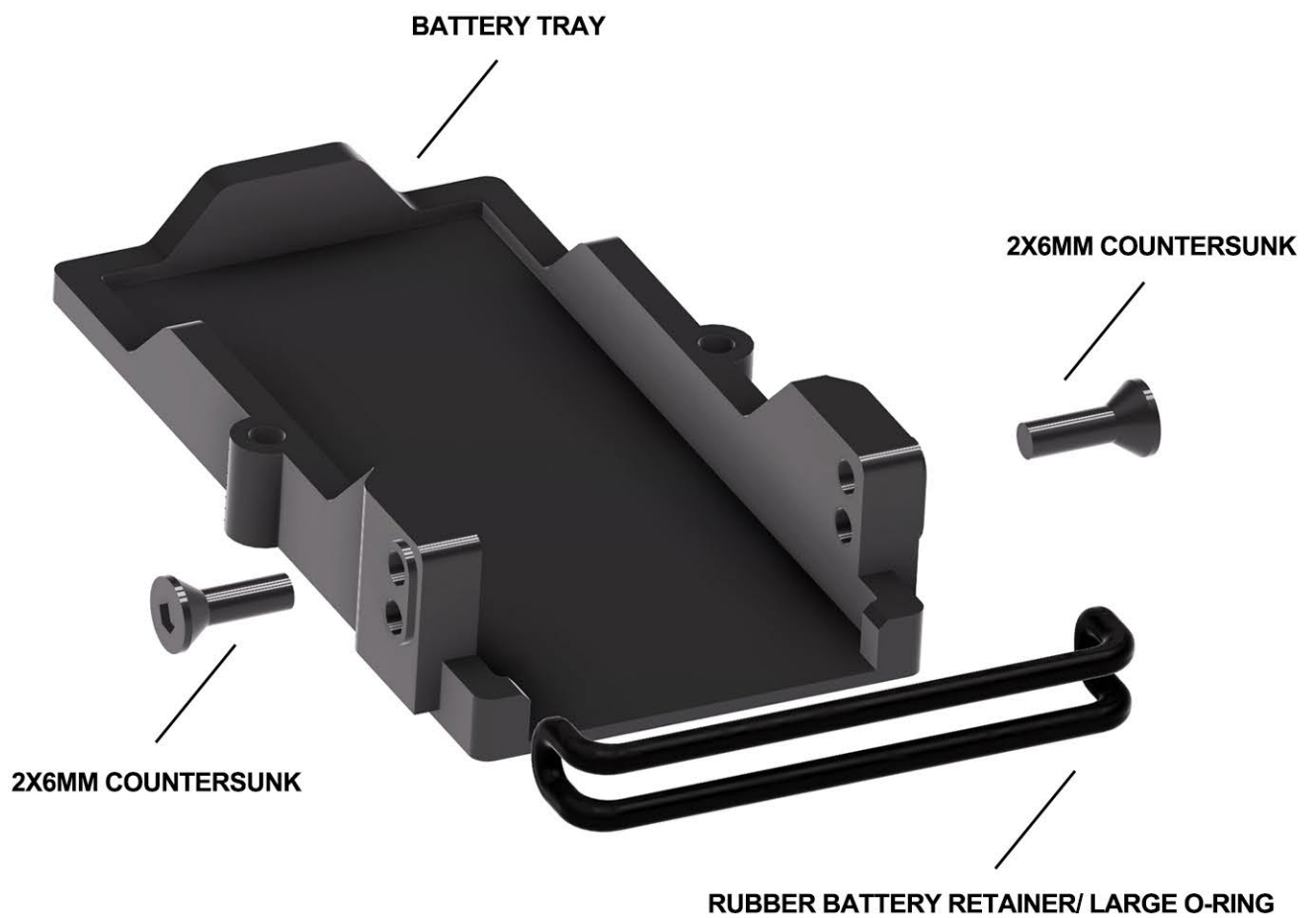
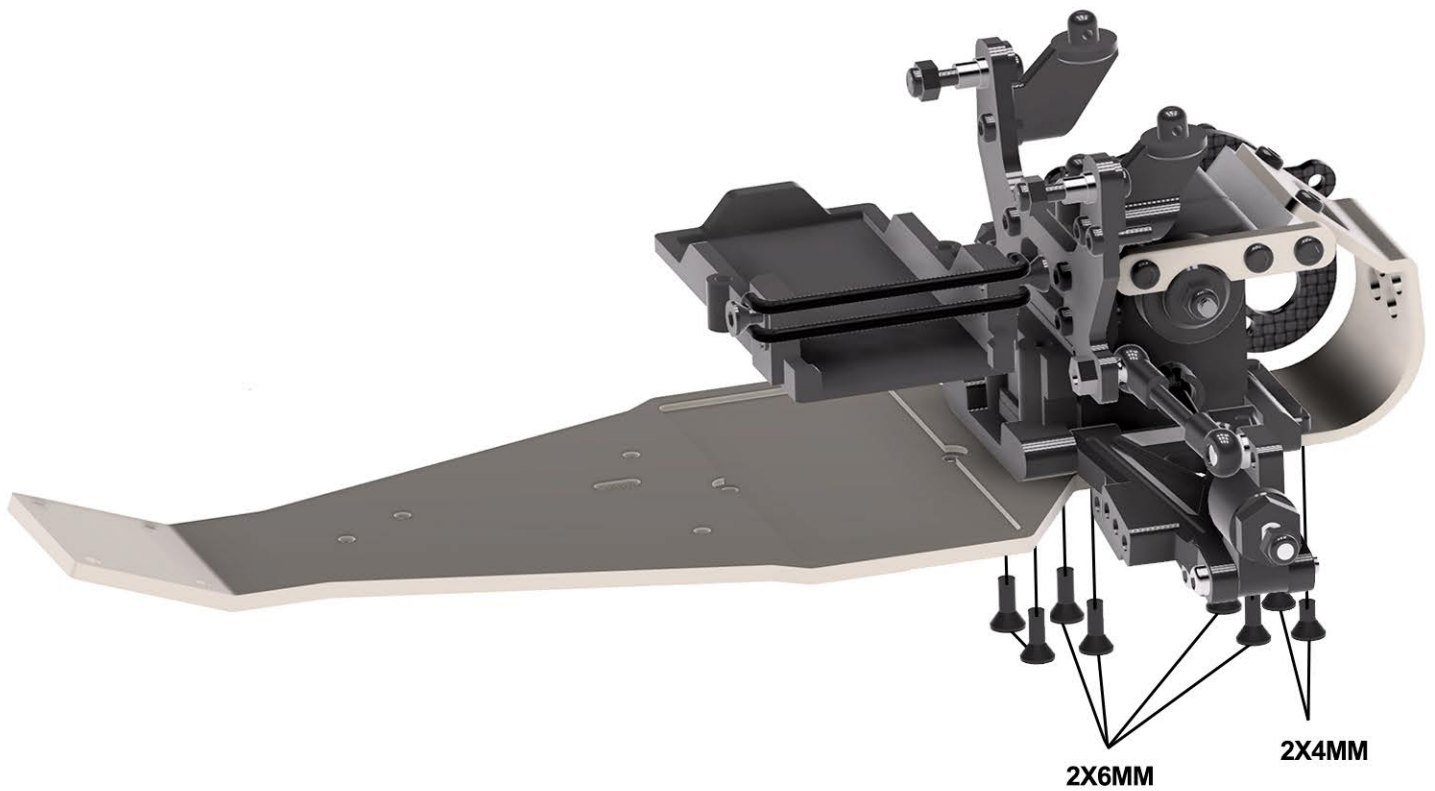


## STEERING BELLCRANK ASSEMBLY



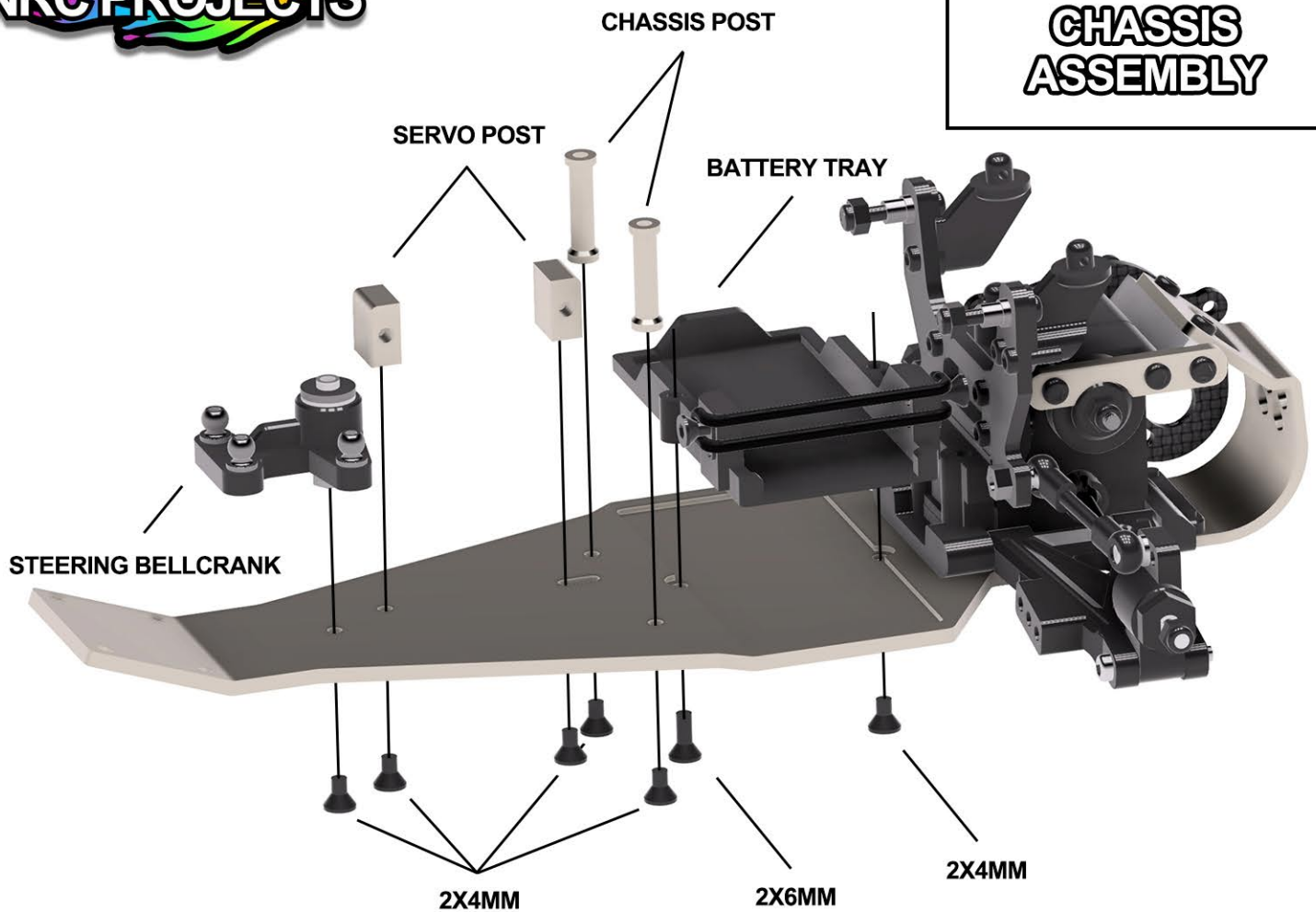


**CHASSIS  
ASSEMBLY**

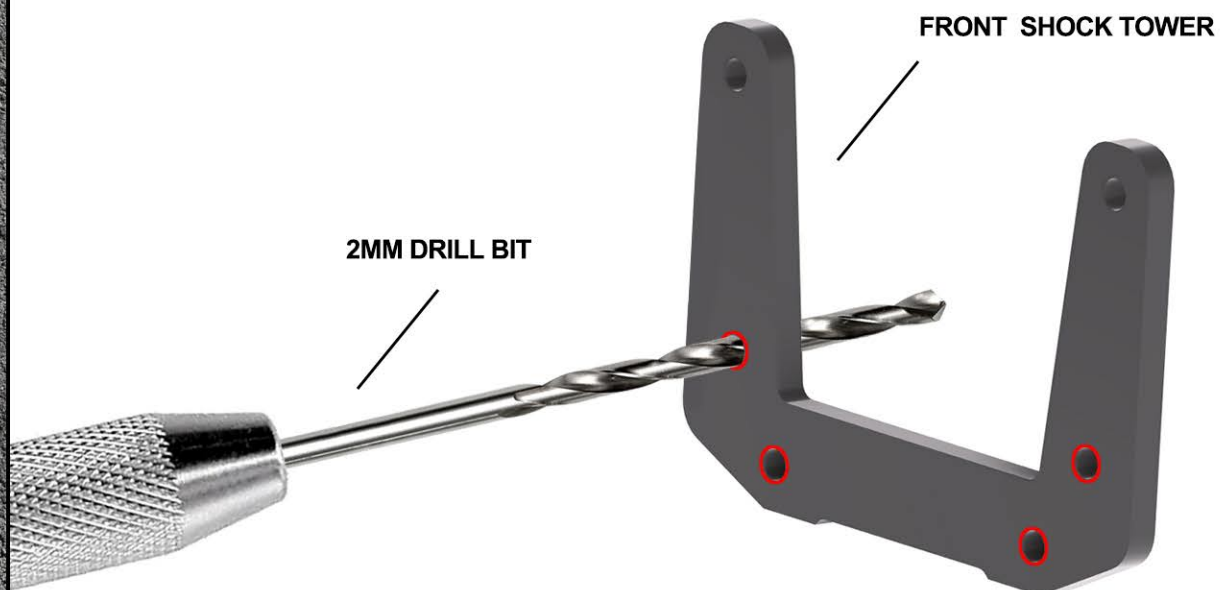




## CHASSIS ASSEMBLY



REAM FRONT SHOCK TOWER HOLES (IN RED) WITH 2MM DRILL BIT





## FRONT END ASSEMBLY

FRONT SHOCK TOWER

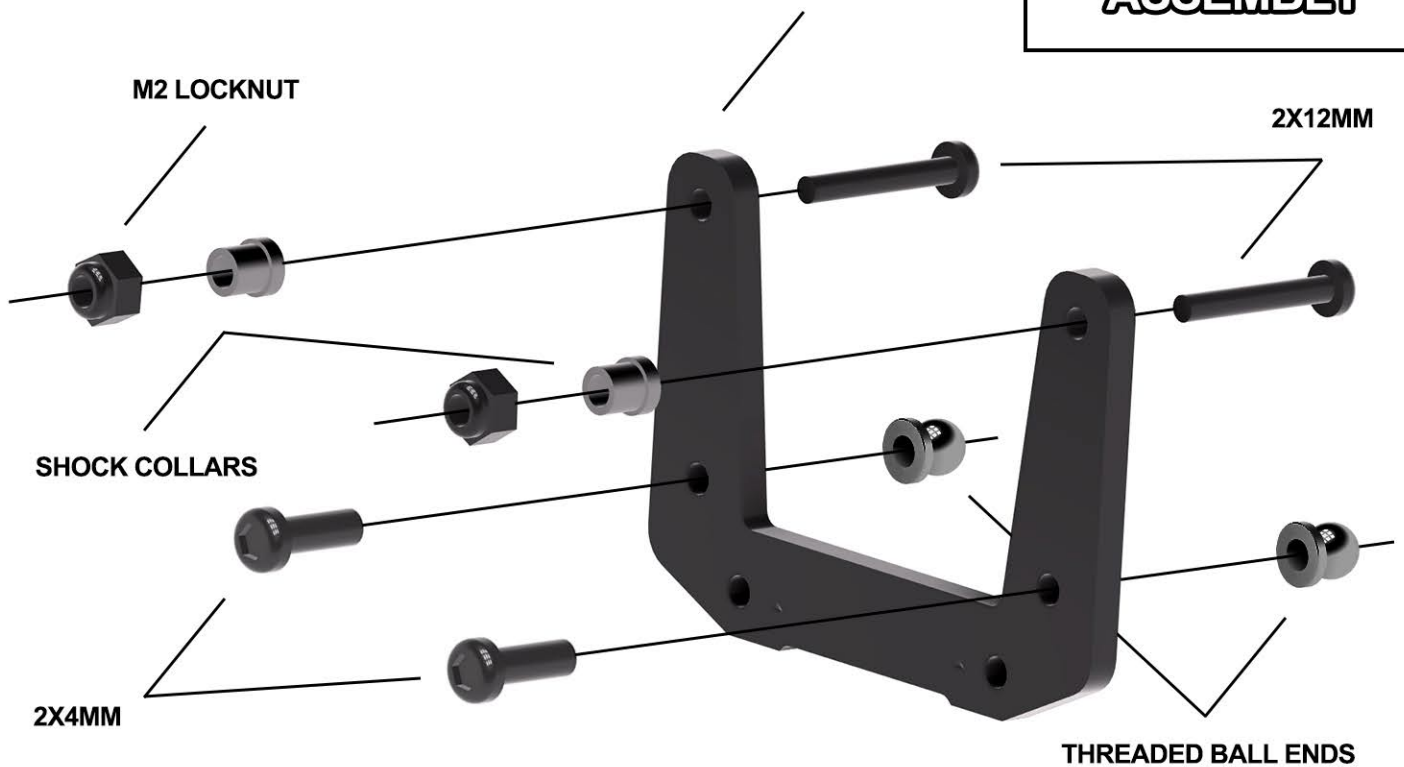
M2 LOCKNUT

2X12MM

SHOCK COLLARS

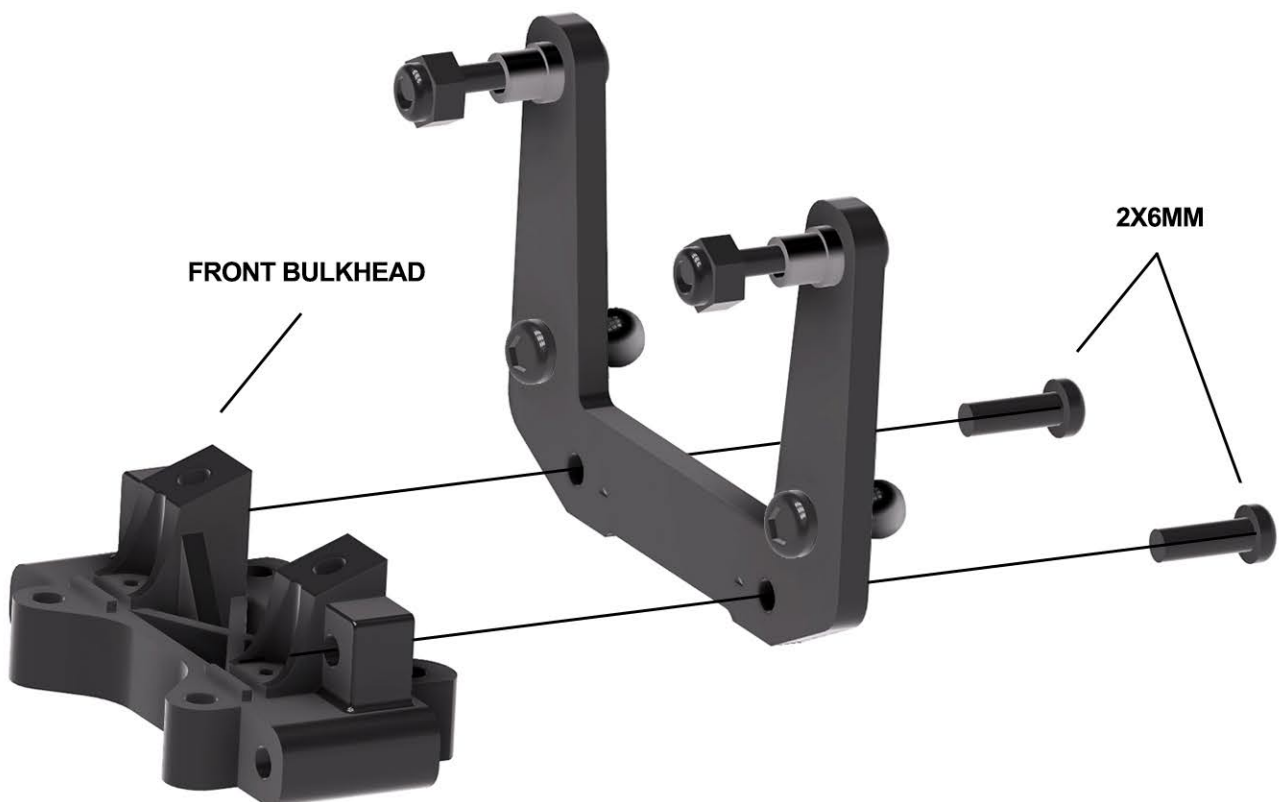
2X4MM

THREADED BALL ENDS



FRONT BULKHEAD

2X6MM





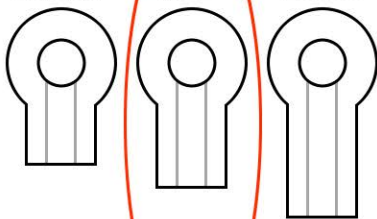
## FRONT END ASSEMBLY



SHORT

MED

LONG

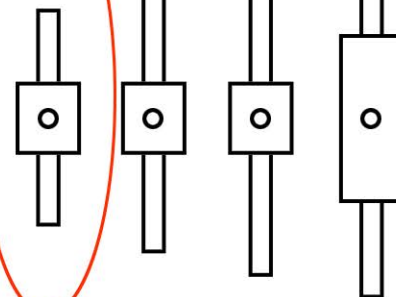


15MM

16MM

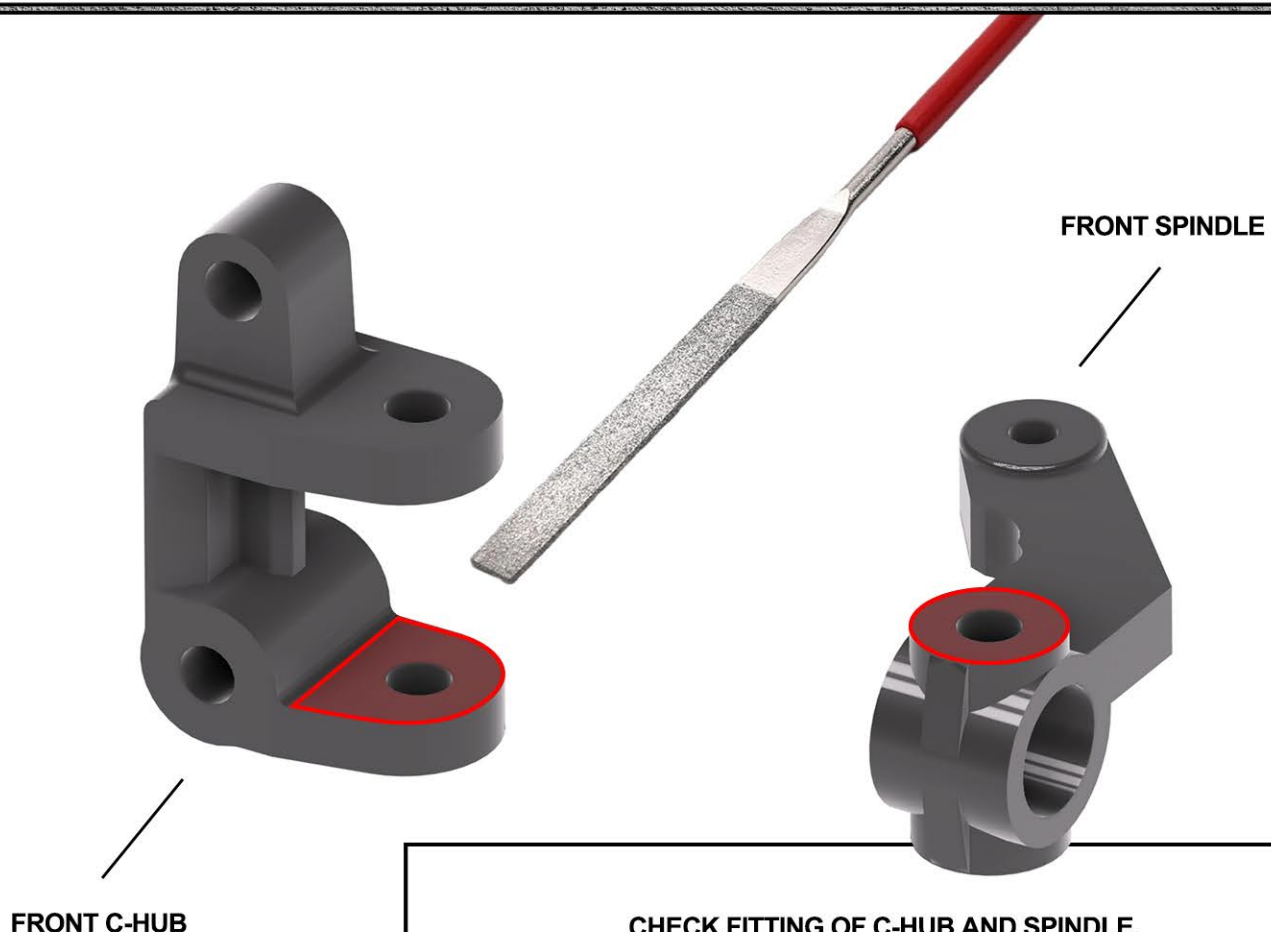
17MM

STEERING





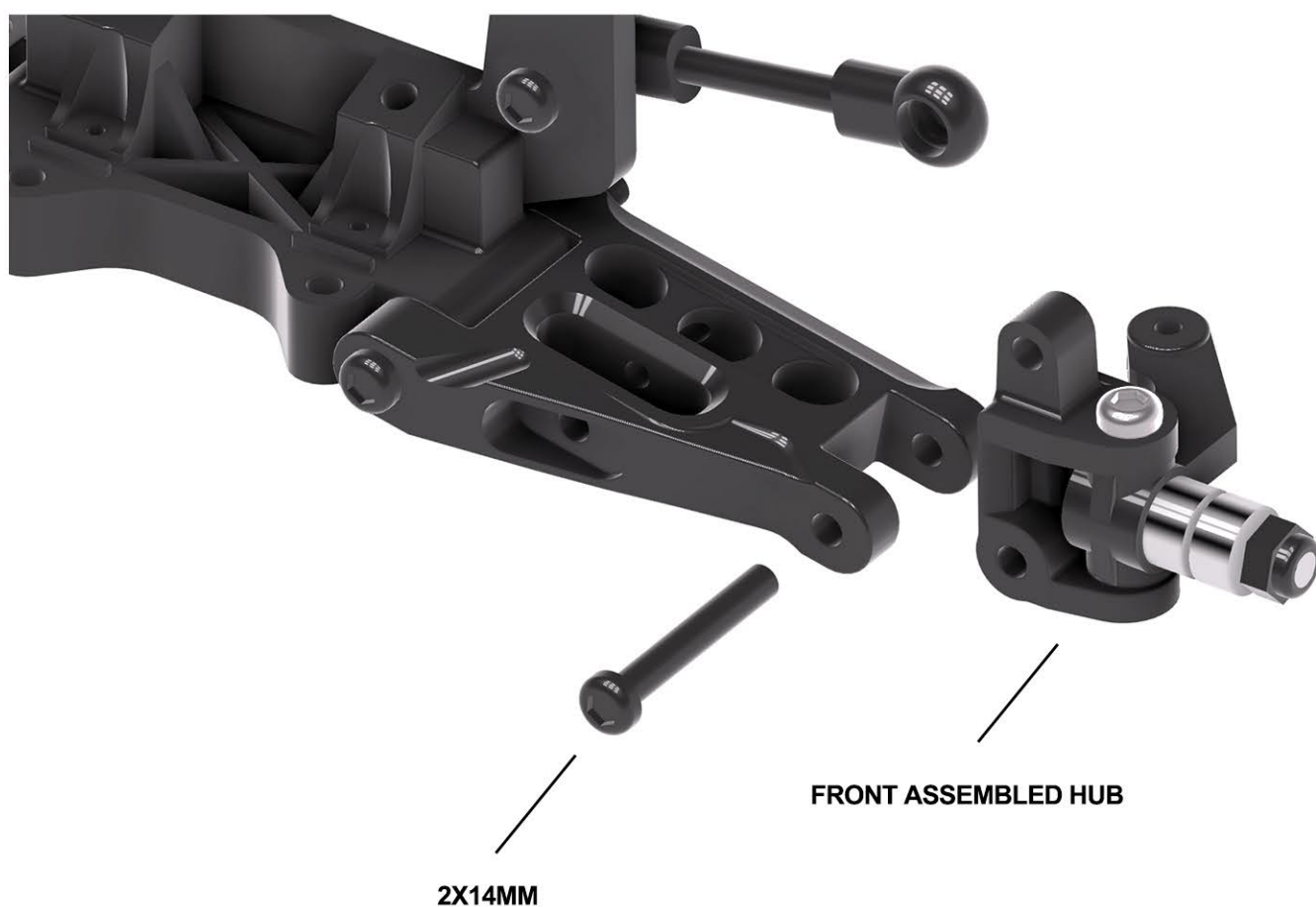
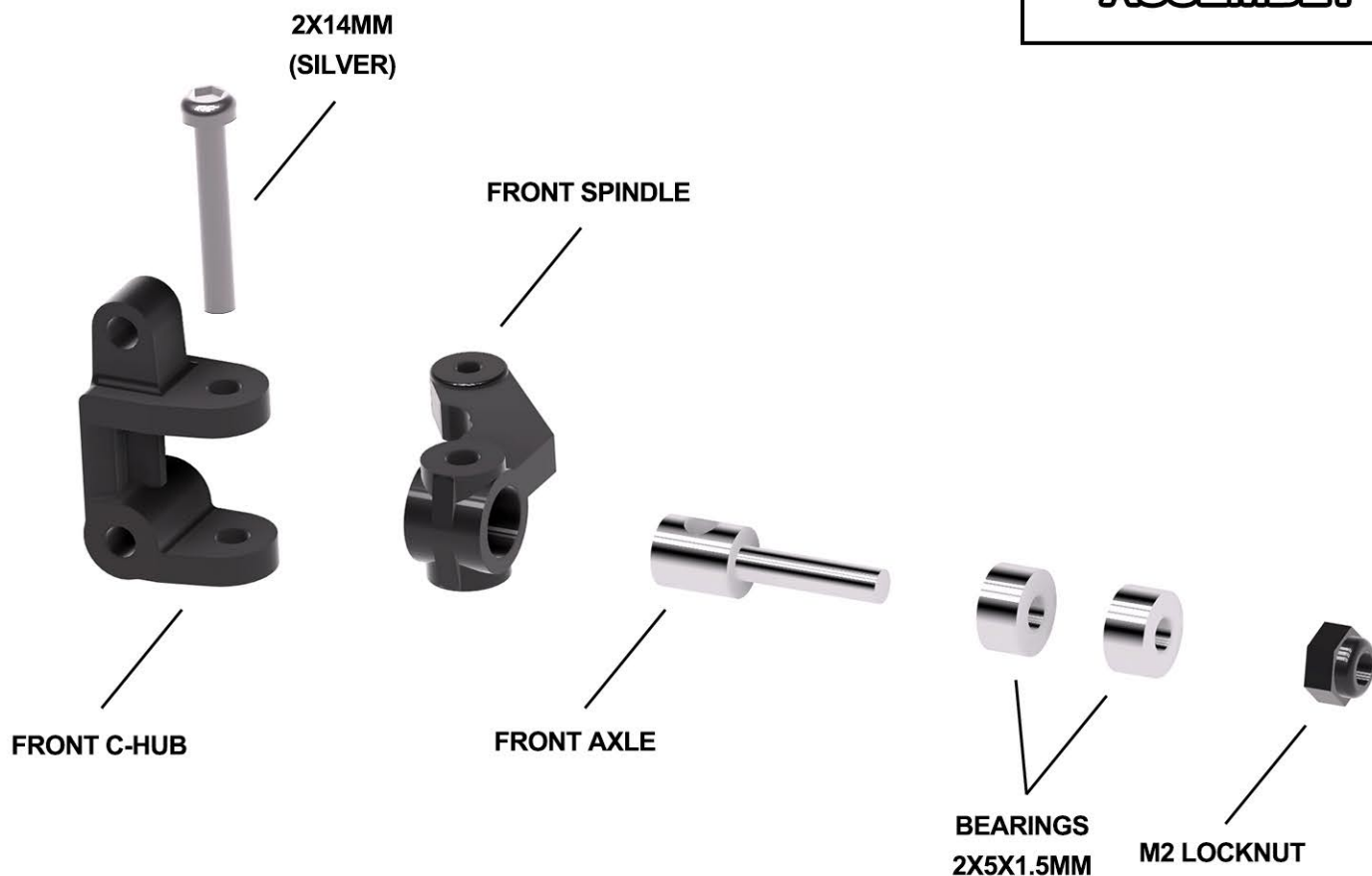
## FRONT END ASSEMBLY



CHECK FITTING OF C-HUB AND SPINDLE.  
IF IT IS TIGHT, USE THE HOBBY FILE TO REMOVE SOME  
MATERIAL FROM THE AREAS IN RED



## FRONT END ASSEMBLY





## FRONT END ASSEMBLY

SHORT BALLSTUD

LONG BALLSTUD

SHORT BALLSTUD

LONG BALLSTUD

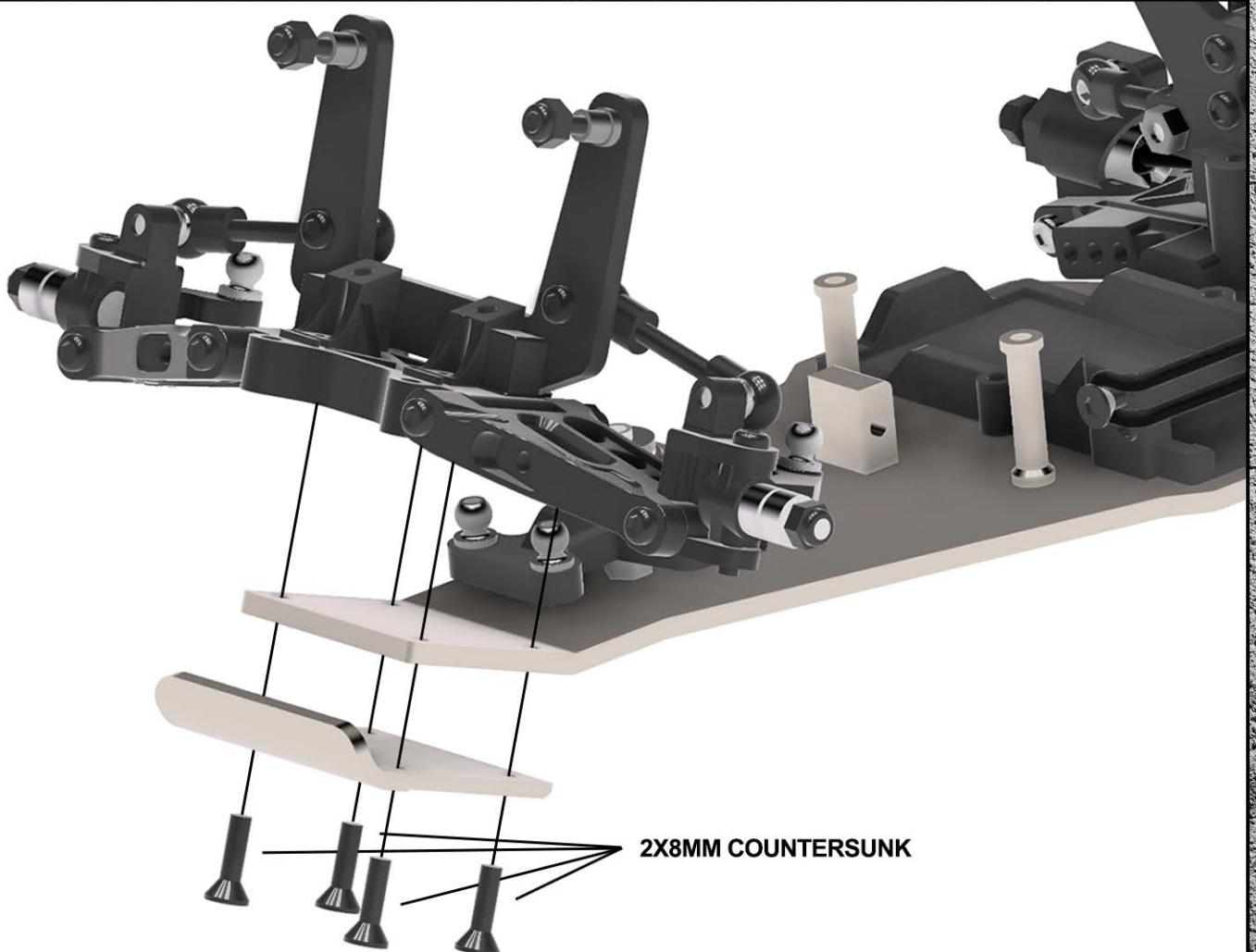
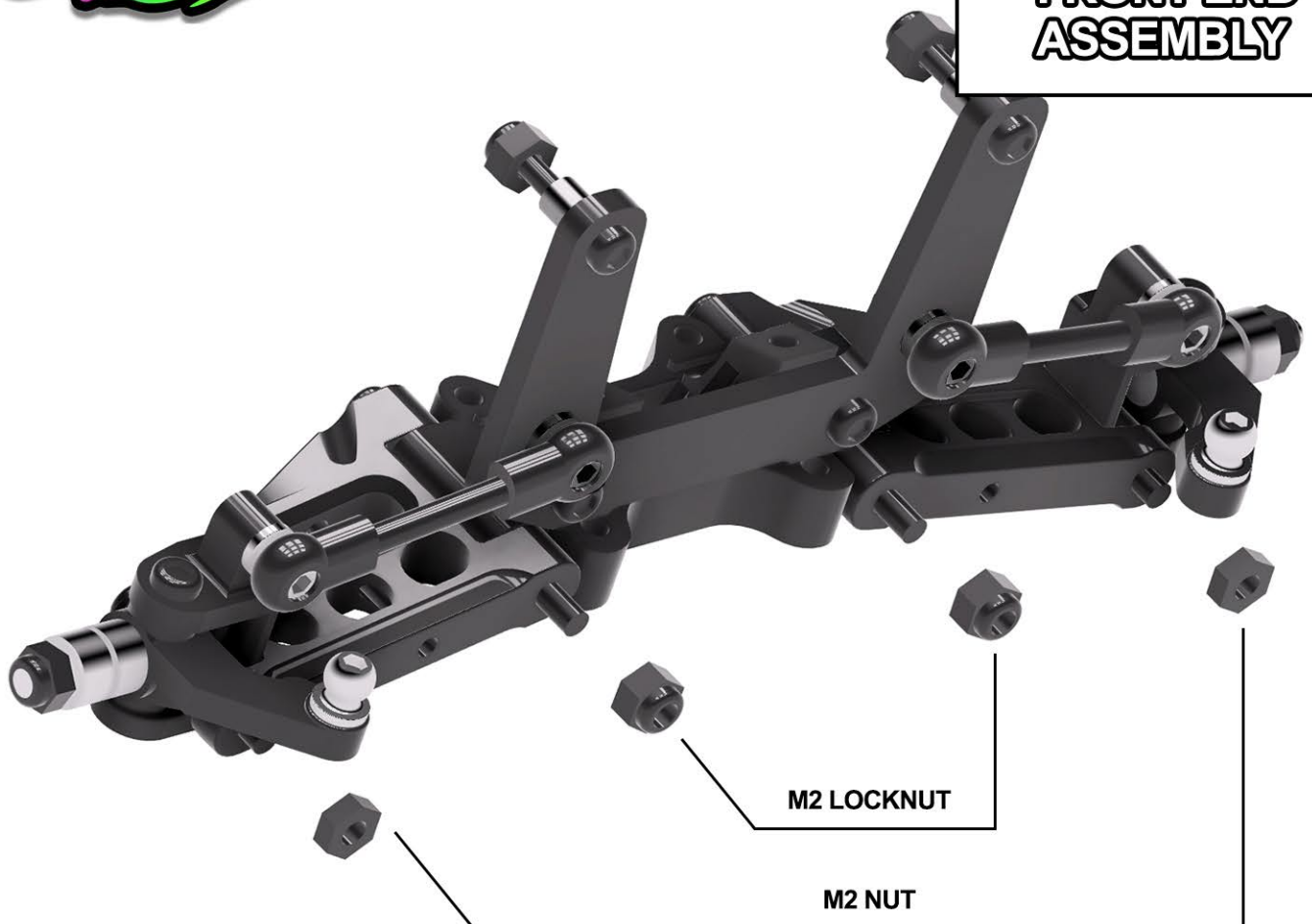


ATTACH  
CAMBER LINK





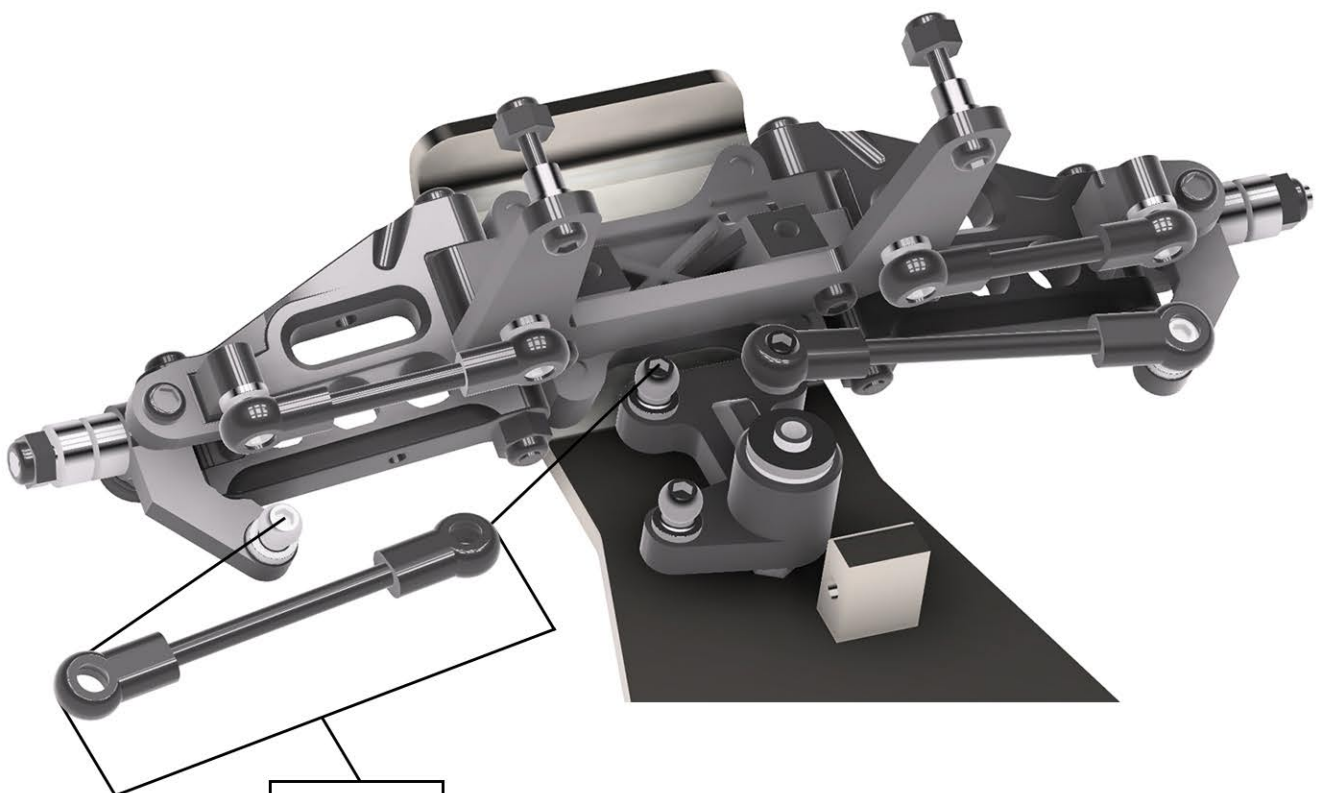
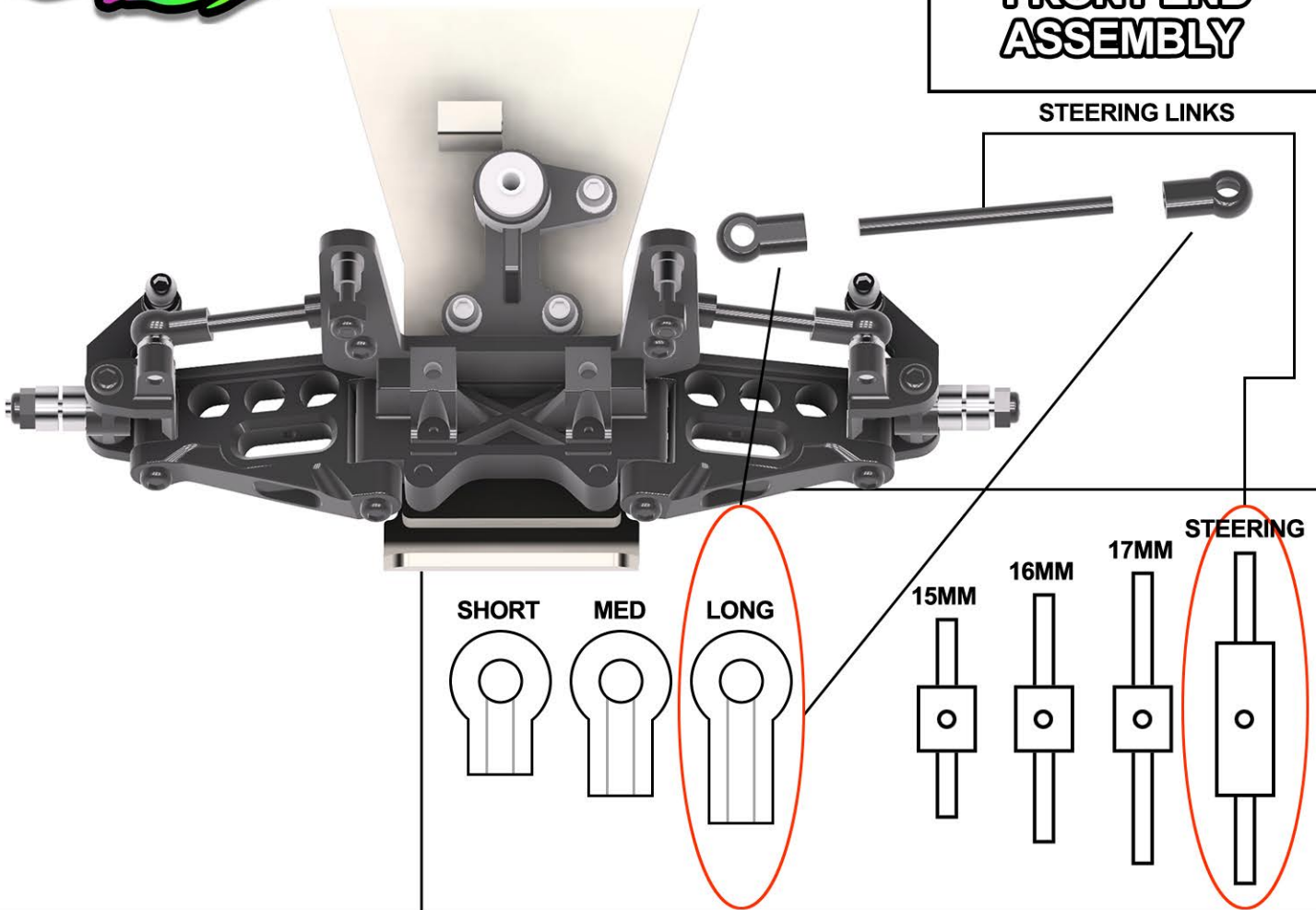
**FRONT END  
ASSEMBLY**





## FRONT END ASSEMBLY

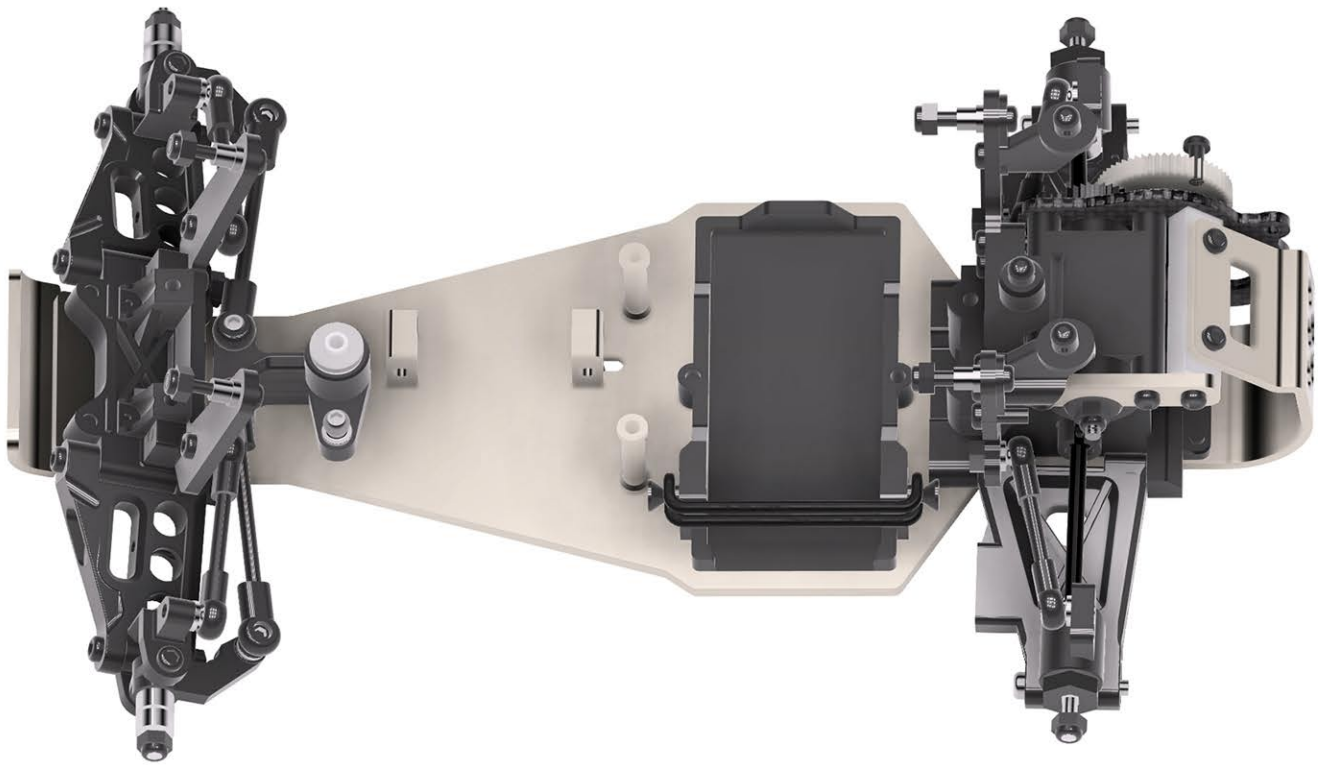
STEERING LINKS



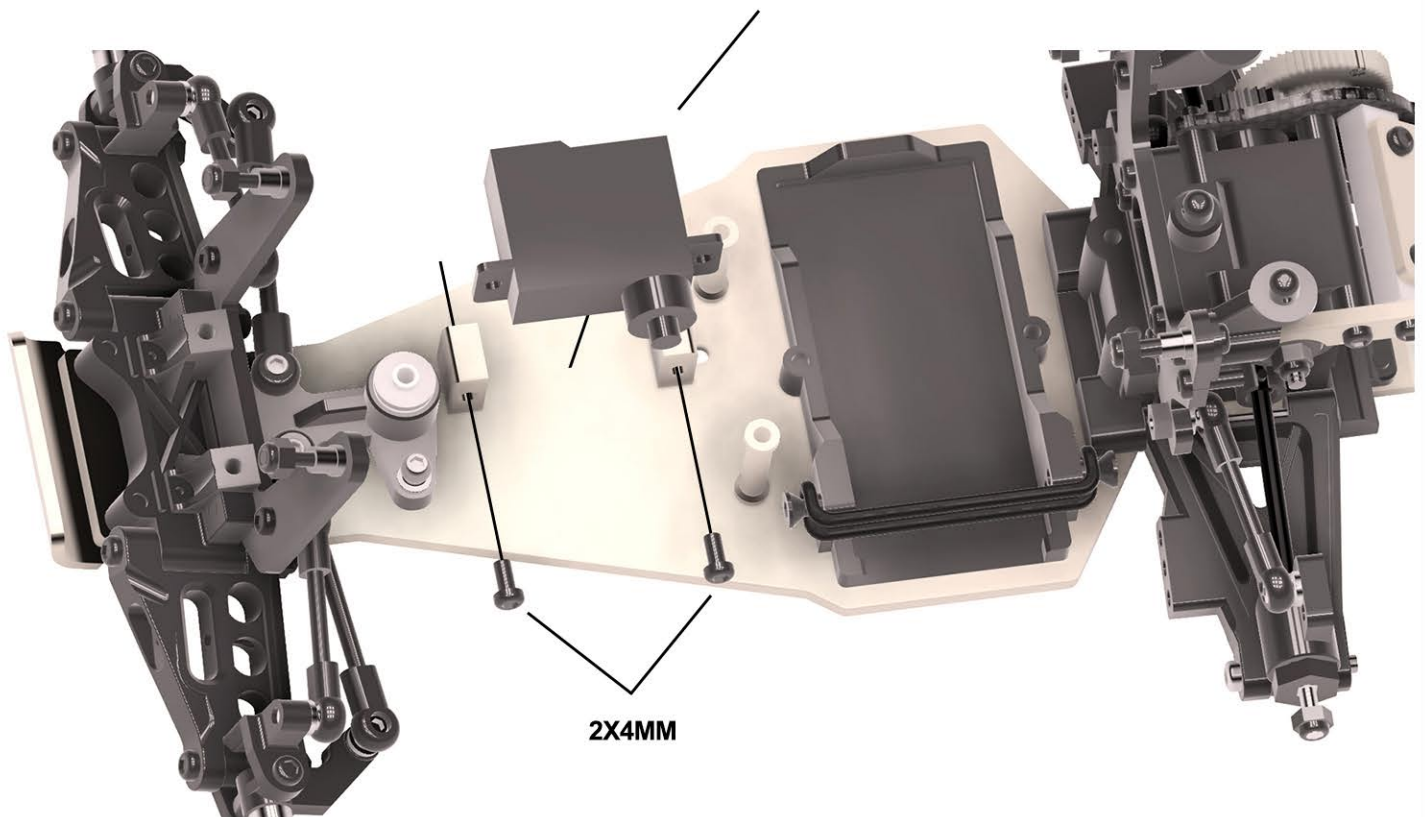
39.5MM

STEERING LINK LENGTH

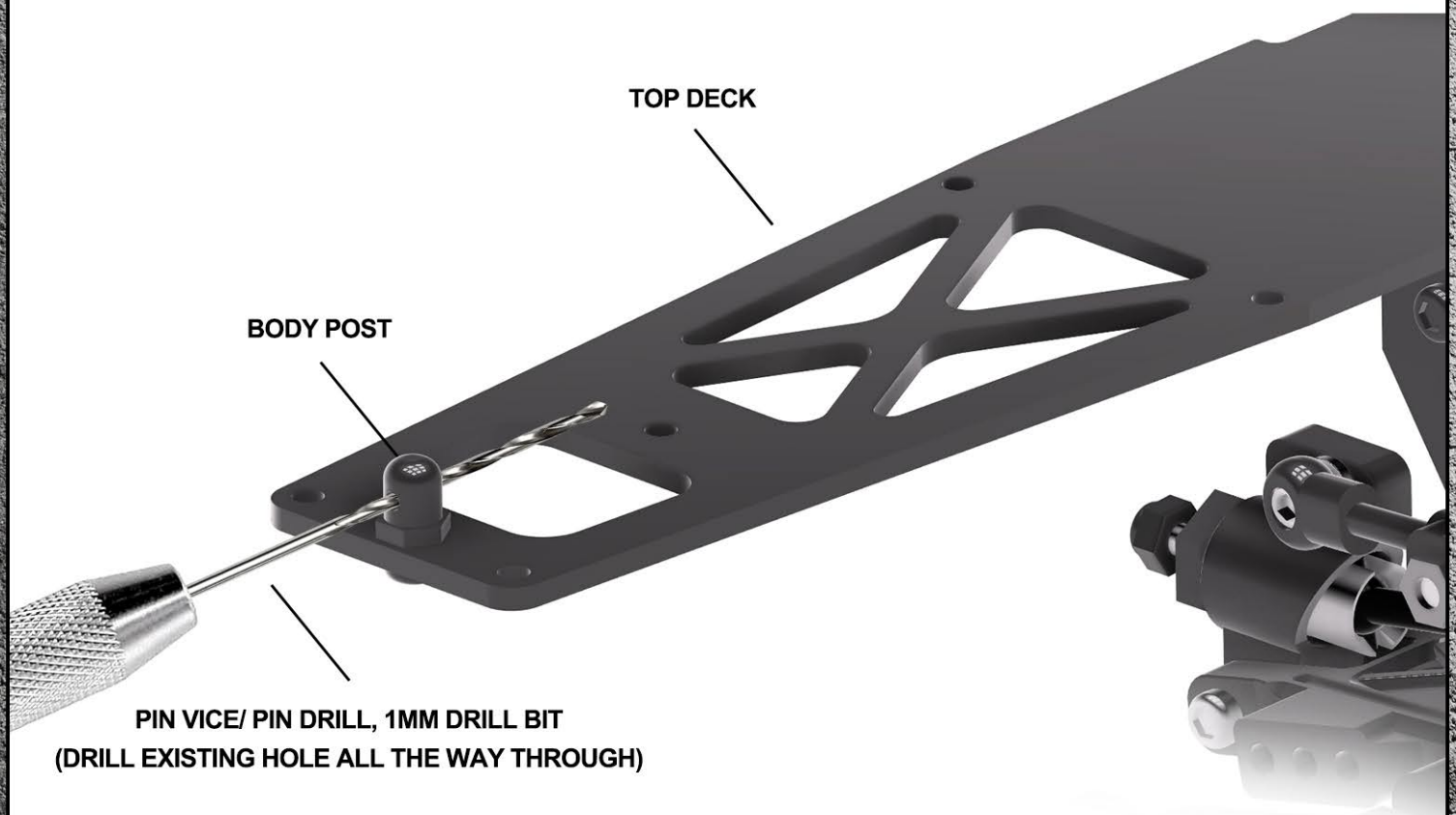
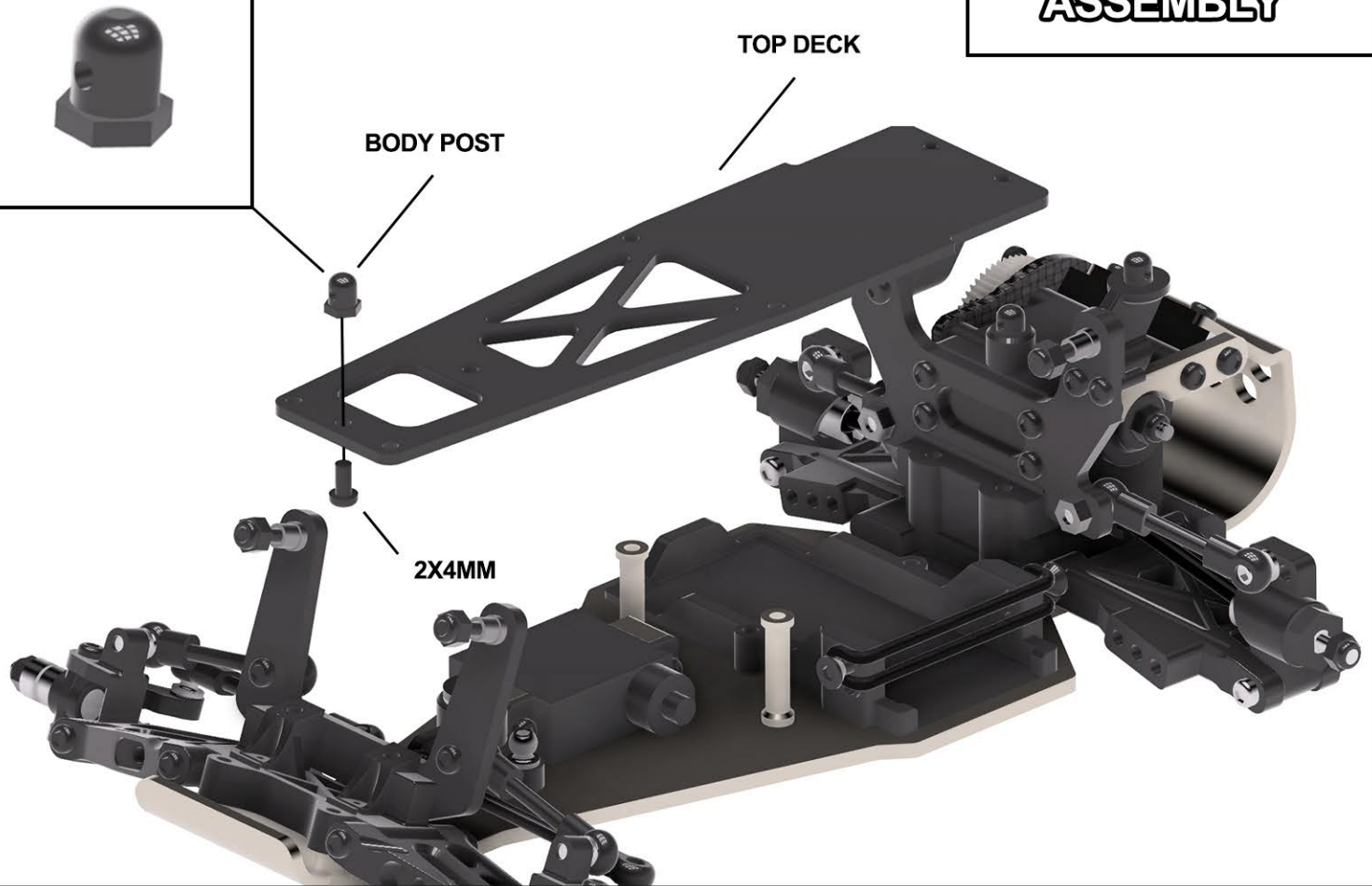




**STEERING SERVO**

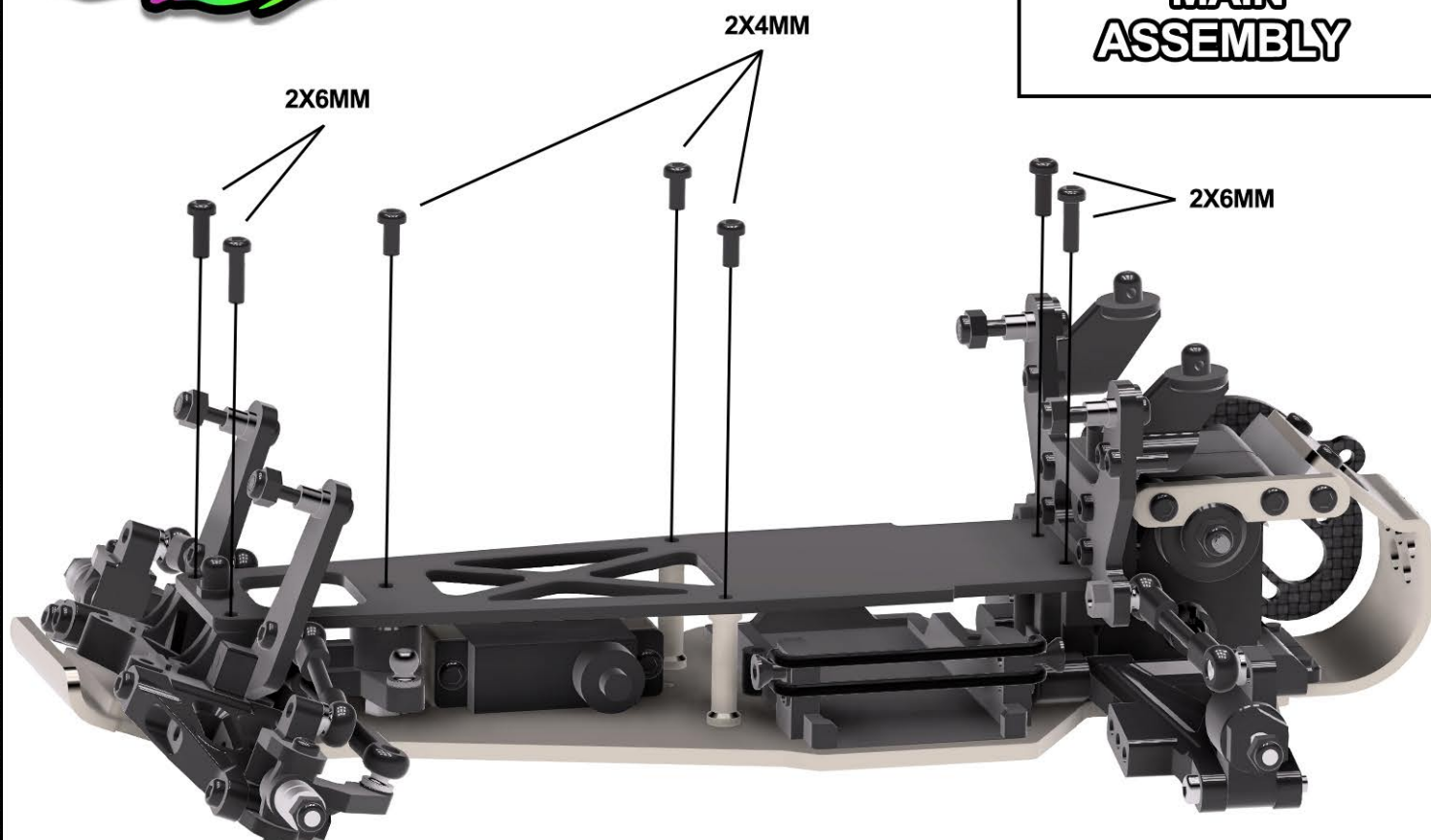






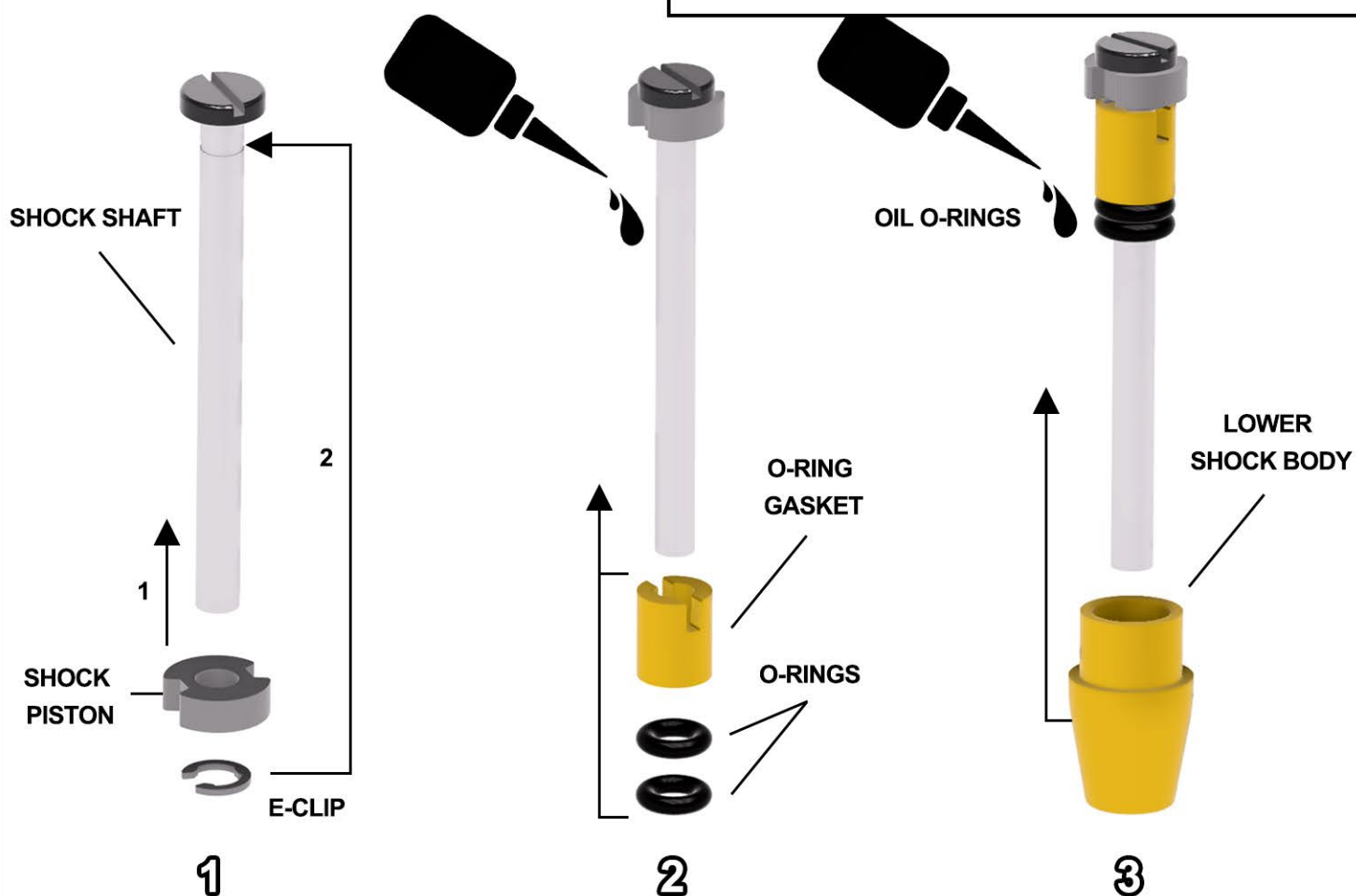


## MAIN ASSEMBLY

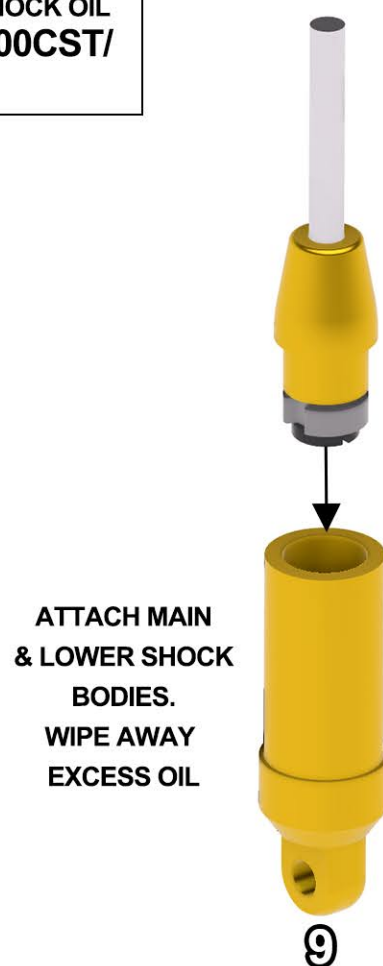
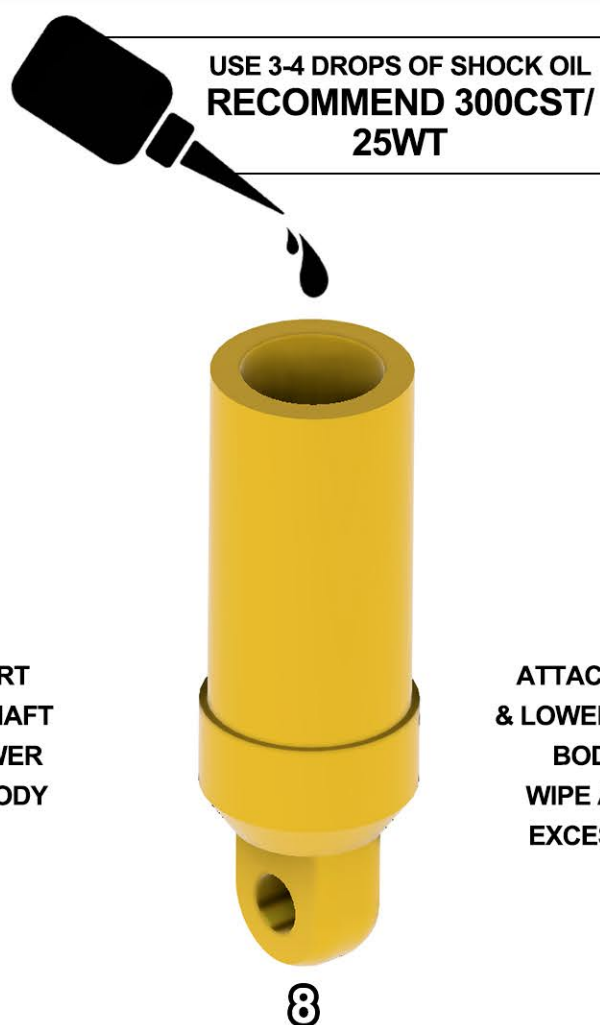
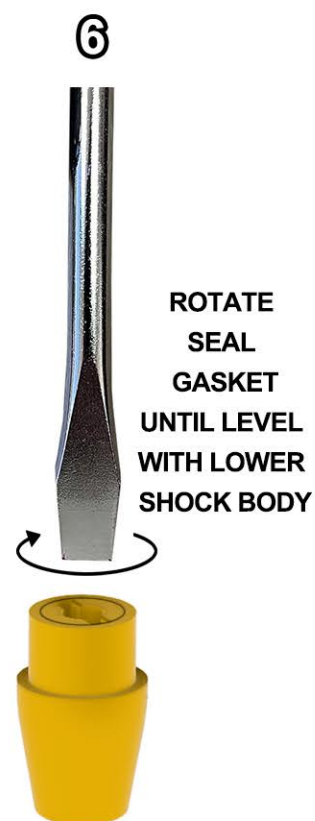
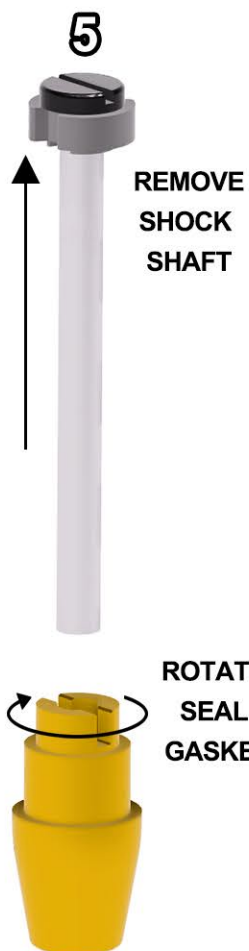


### SILICON OIL/ SHOCK OIL

### SHOCK ASSEMBLY- PARTS FROM SHOCK PARTS BAG



## SHOCK ASSEMBLY

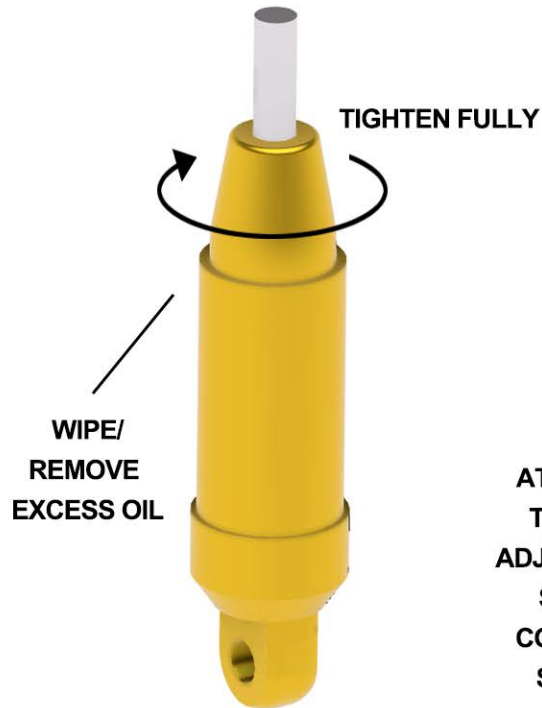




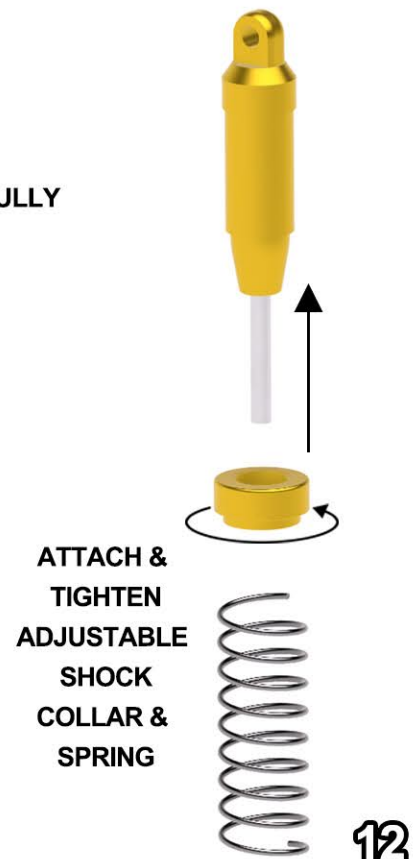
## SHOCK ASSEMBLY



10

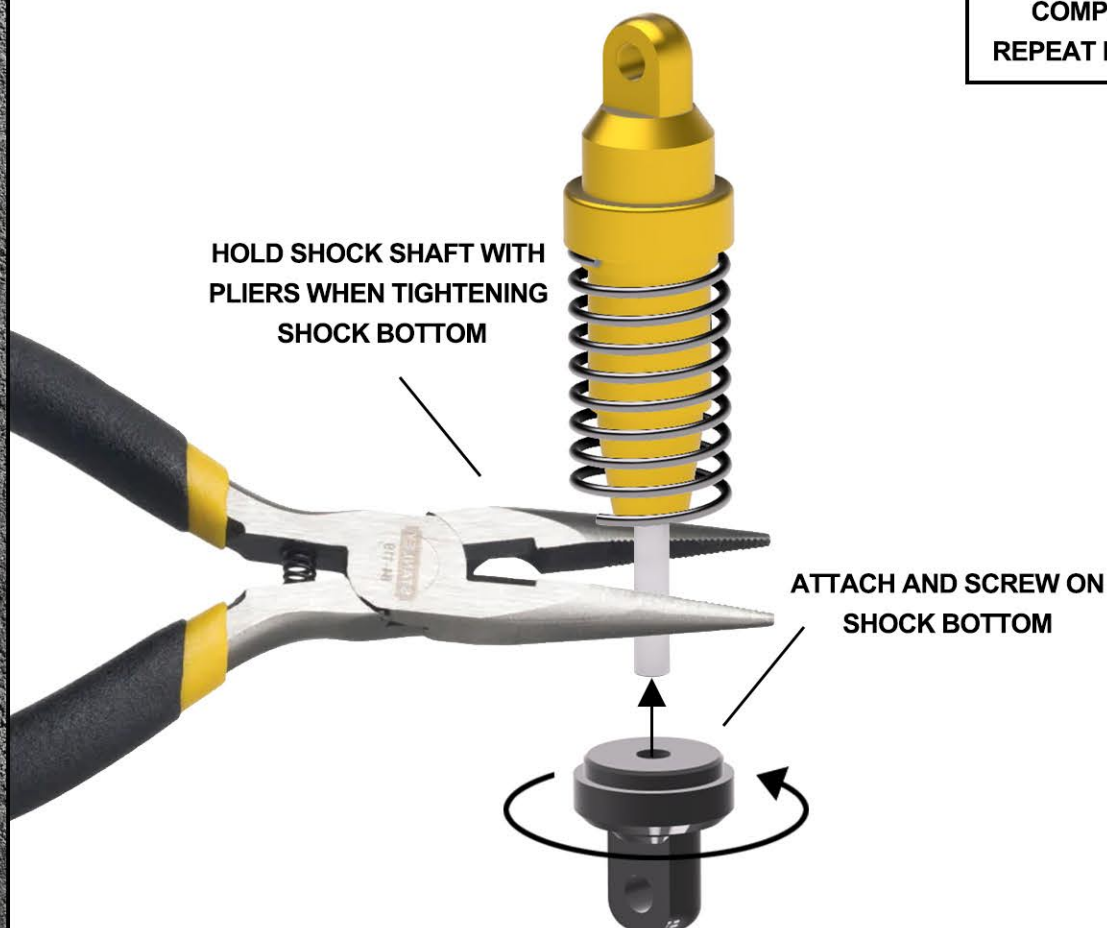


11



12

COMPLETE SHOCK ASSEMBLY!  
REPEAT PROCESS 2 FRONT & 2 REAR

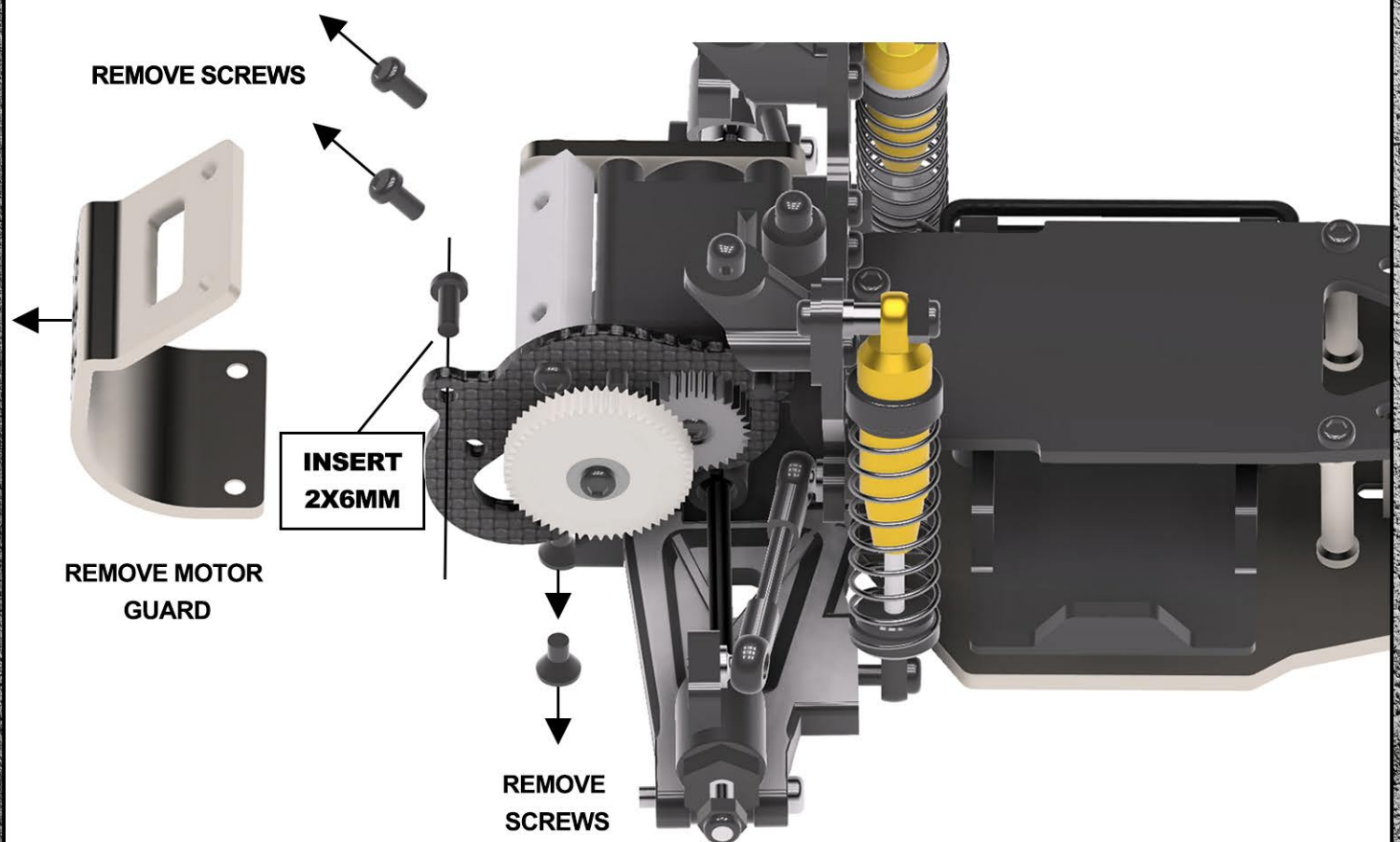
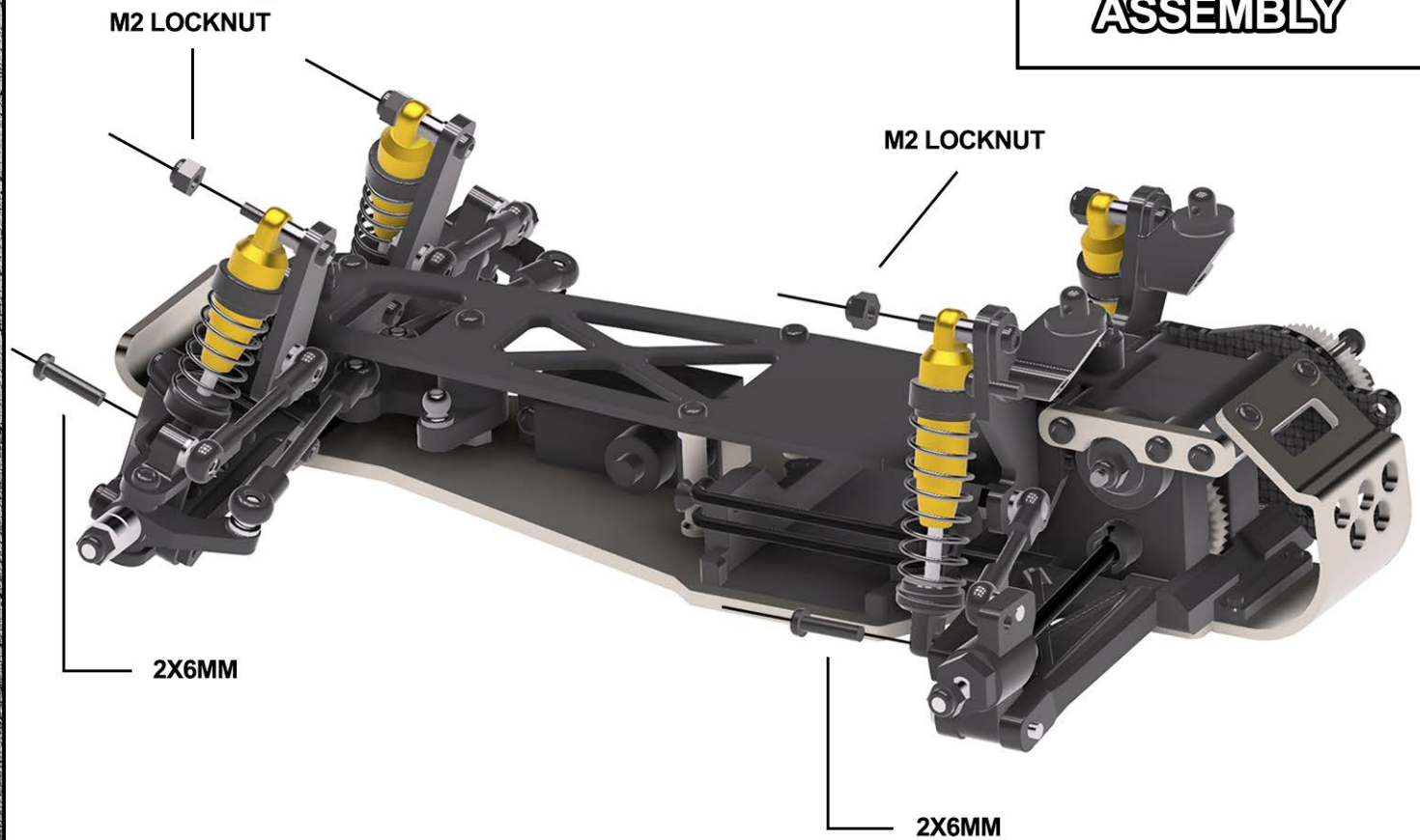


13



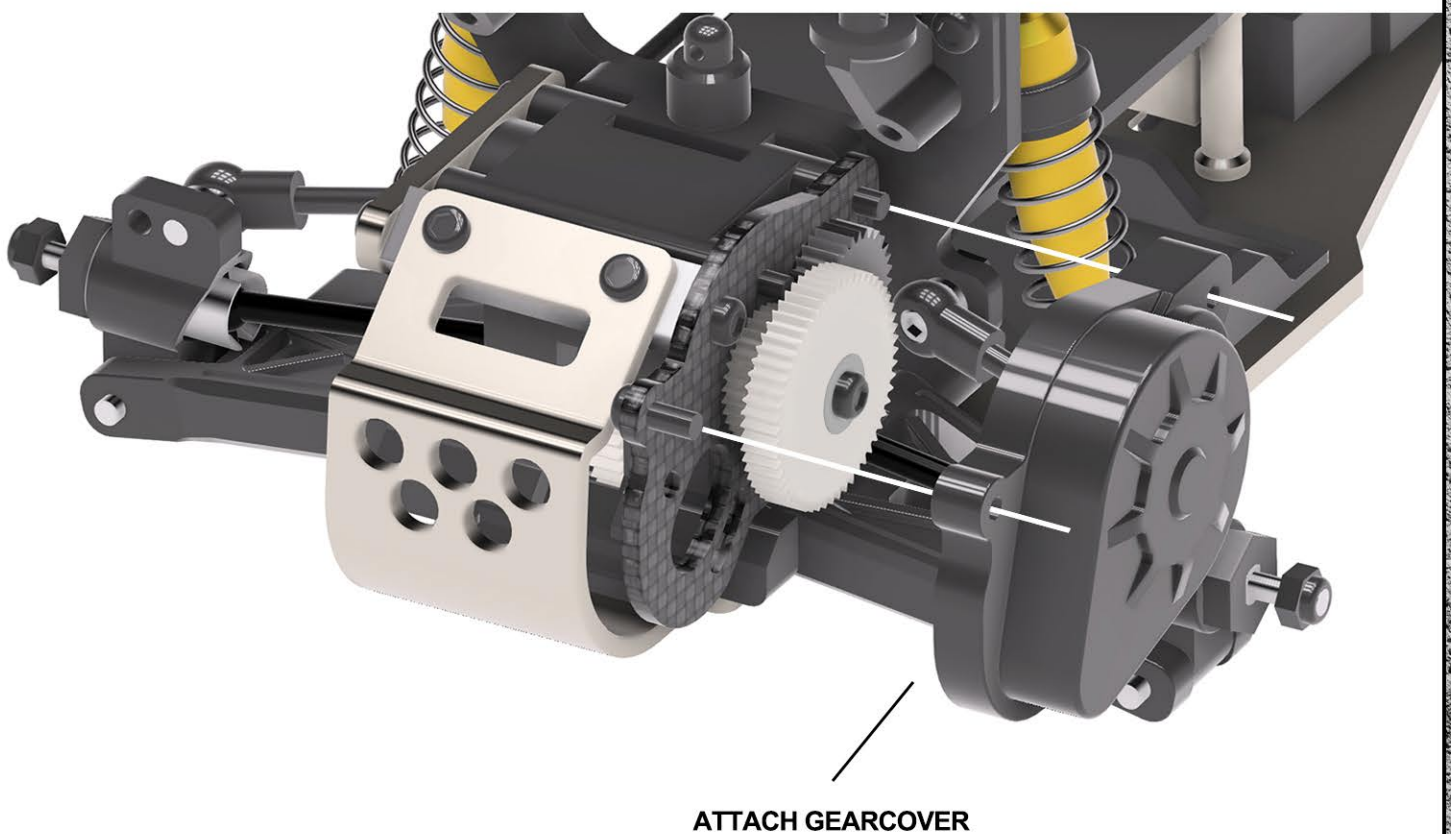
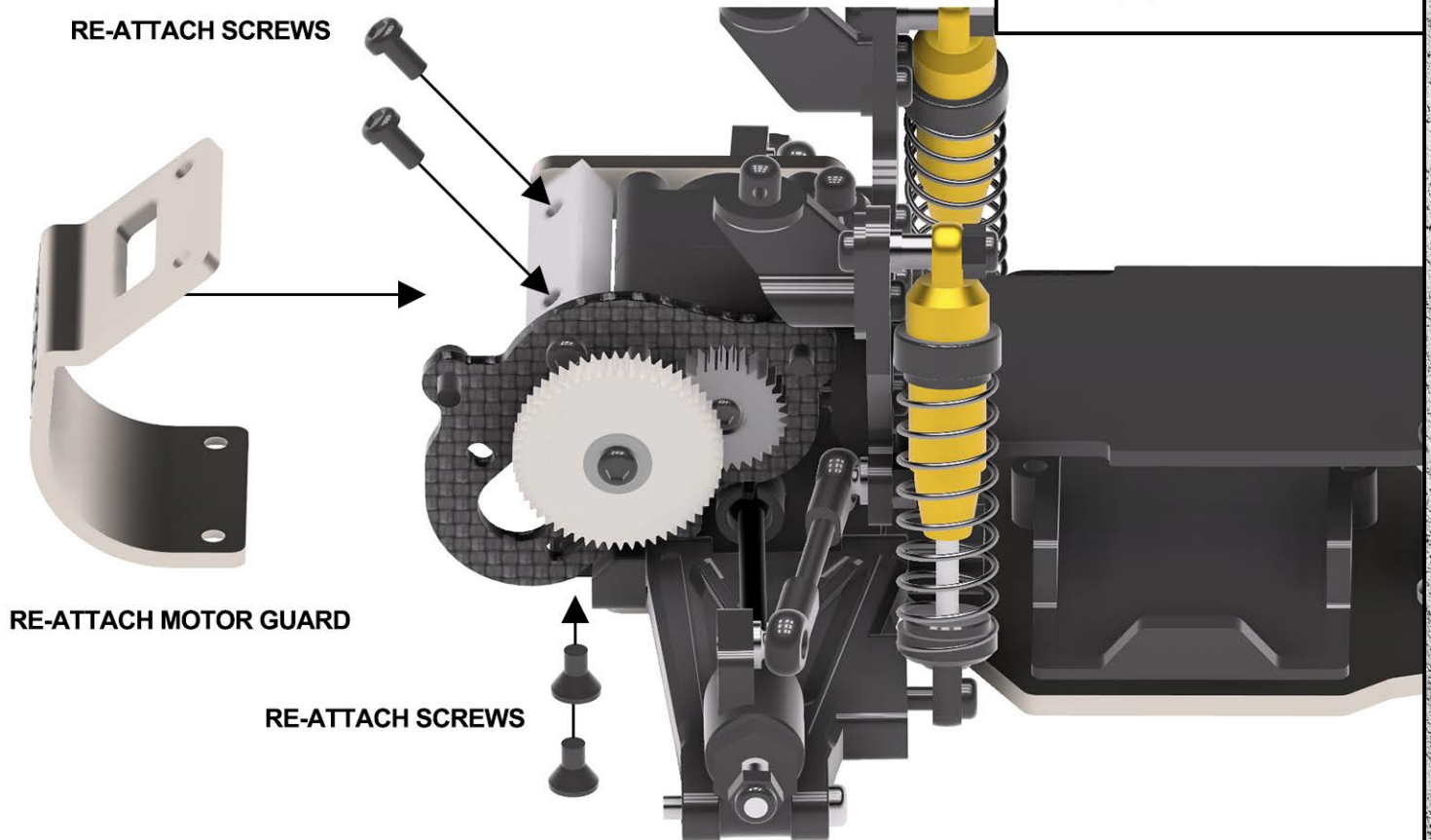
14

## SHOCK ASSEMBLY





## GEARCOVER ASSEMBLY

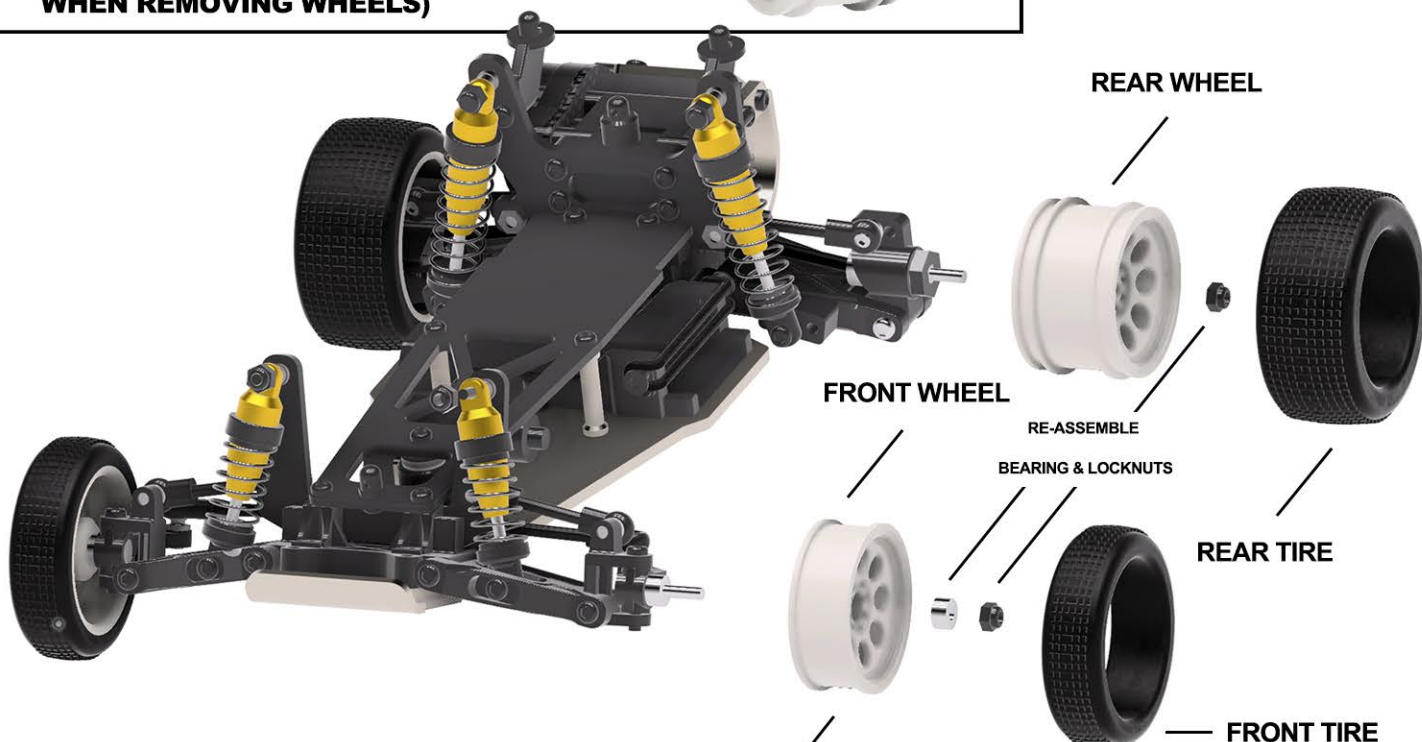




**BEFORE FITTING WHEELS-  
USE M2 DRILL BIT TO MAKE  
A CLEAN AXLE HOLE  
(PREVENTS POSSIBLE DAMAGE  
WHEN REMOVING WHEELS)**



## WHEEL ASSEMBLY



**RECOMMEND PAINTING WHEELS**



**WHITE-  
TAMIYA  
PS1**



**NEON YELLOW-  
TAMIYA  
PS1 & PS27**

**ASSEMBLED ROLLING CHASSIS**

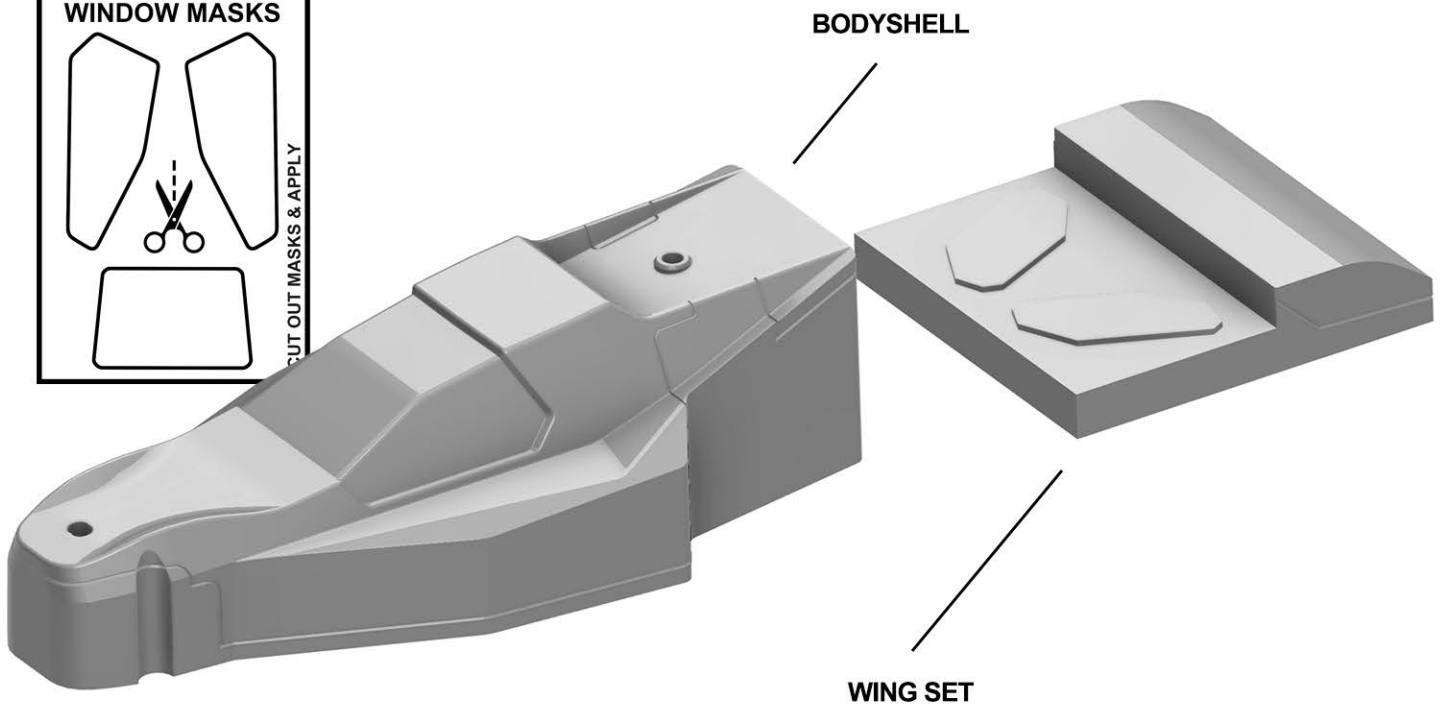




## BODY & WING SET



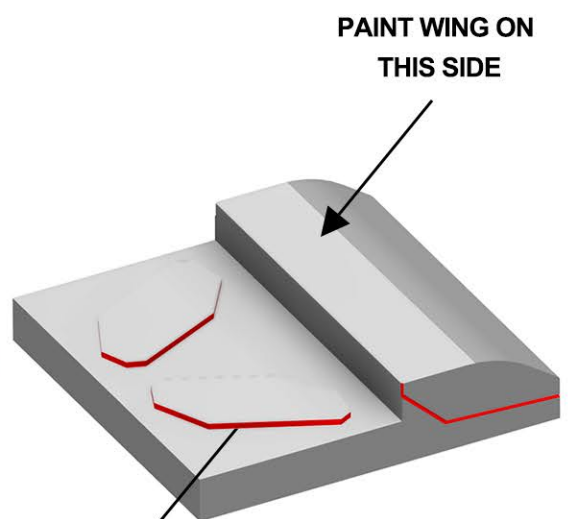
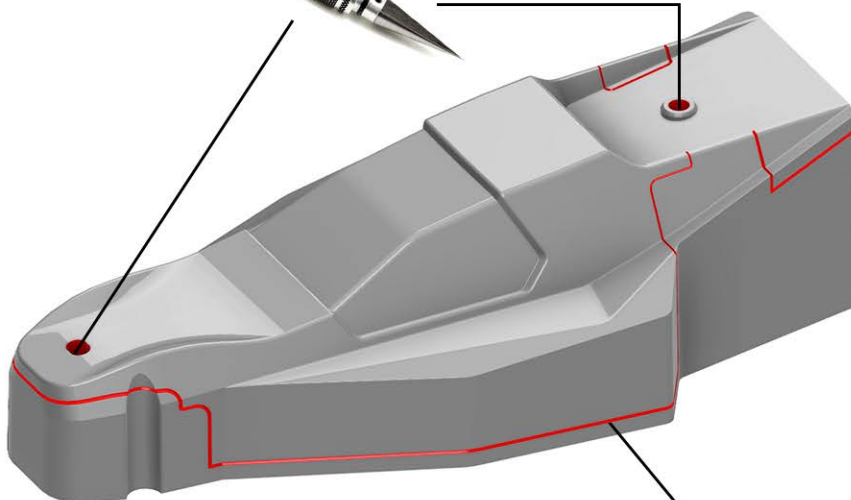
CUT OUT & APPLY WINDOW MASKS  
TO INSIDE OF BODYSHELL



USE POLYCARBONATE/ LEXAN  
PAINTS ON INSIDE OF BODYSHELL

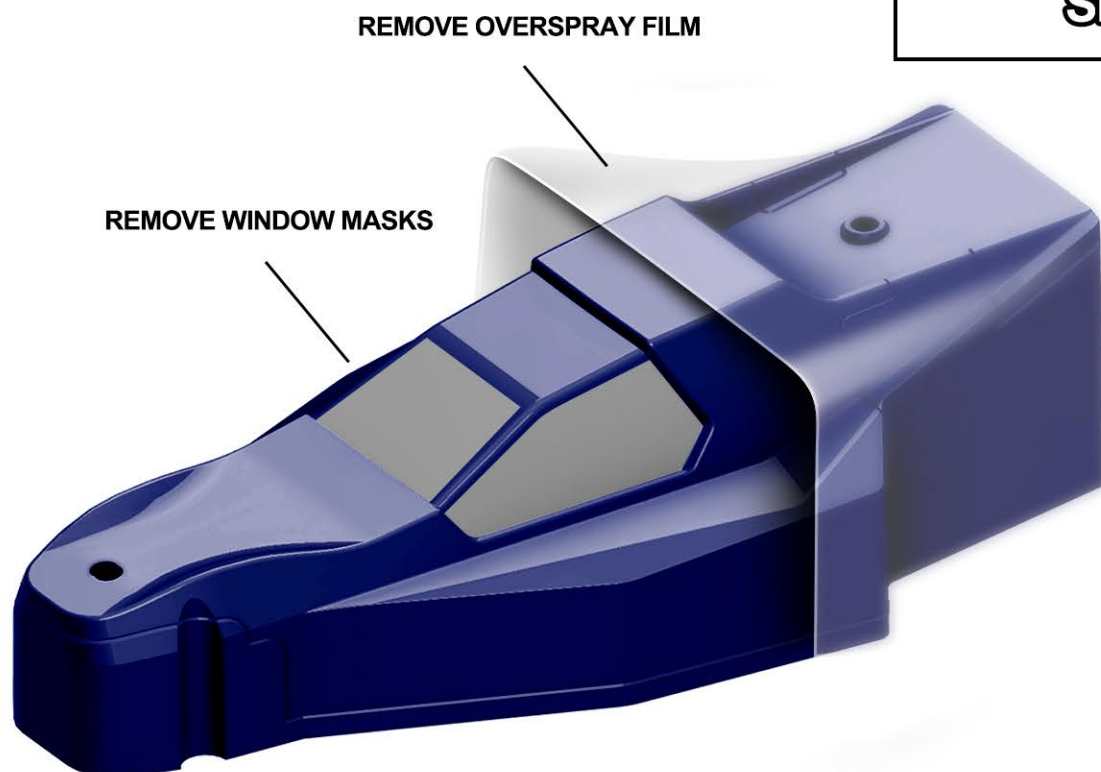


USE BODY REAMER  
FOR HOLES

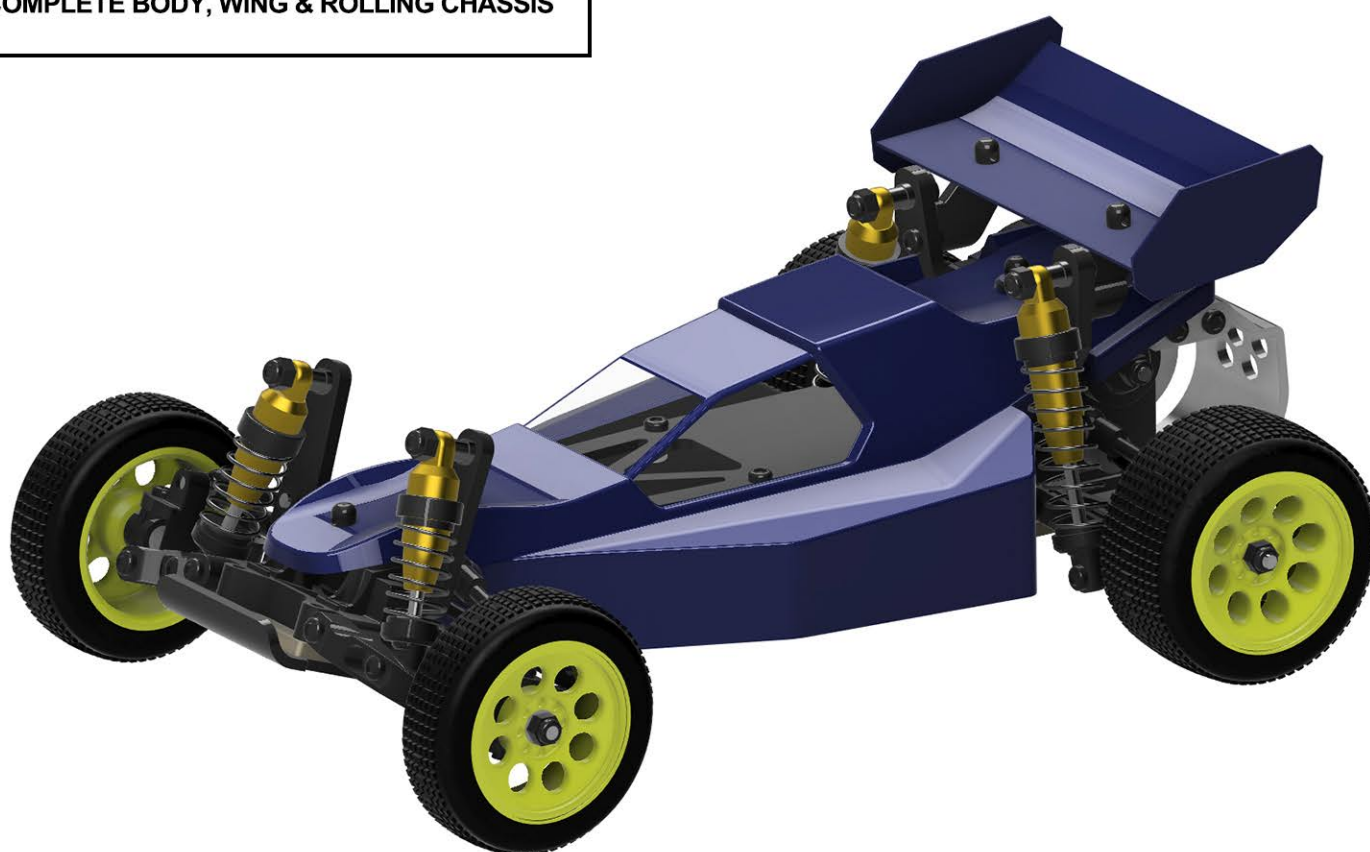


CUT BODYSHELL & WING ALONG RED LINES  
USE DOUBLE-SIDED TAPE TO ATTACH WING ENDS

## BODY & WING SET



### COMPLETE BODY, WING & ROLLING CHASSIS

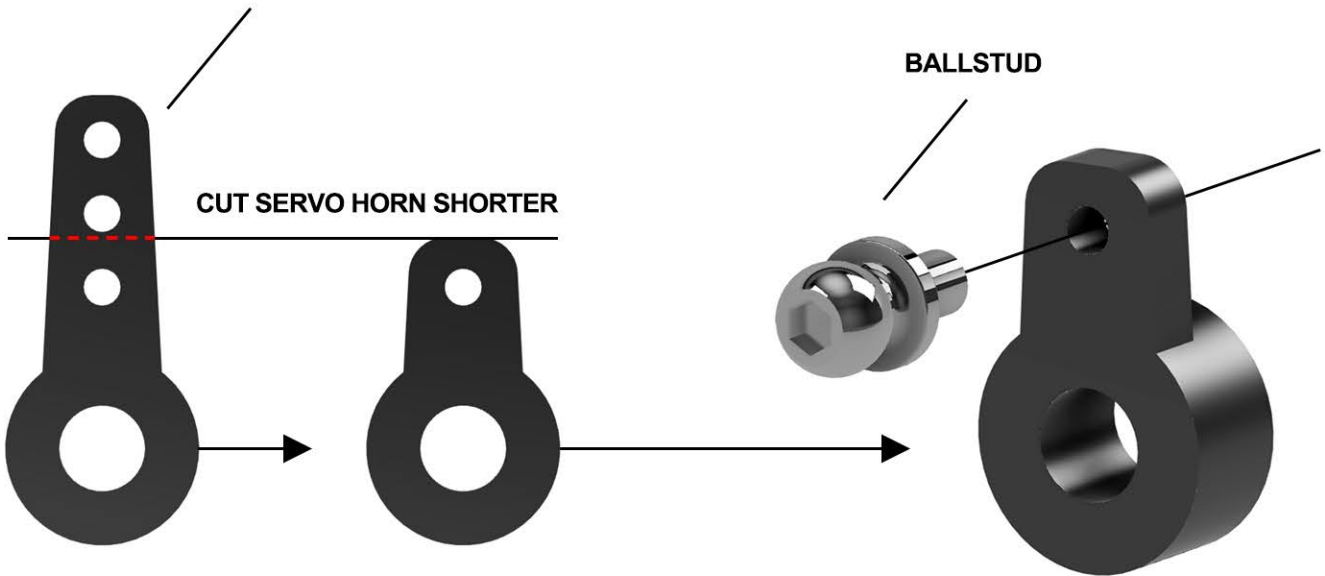




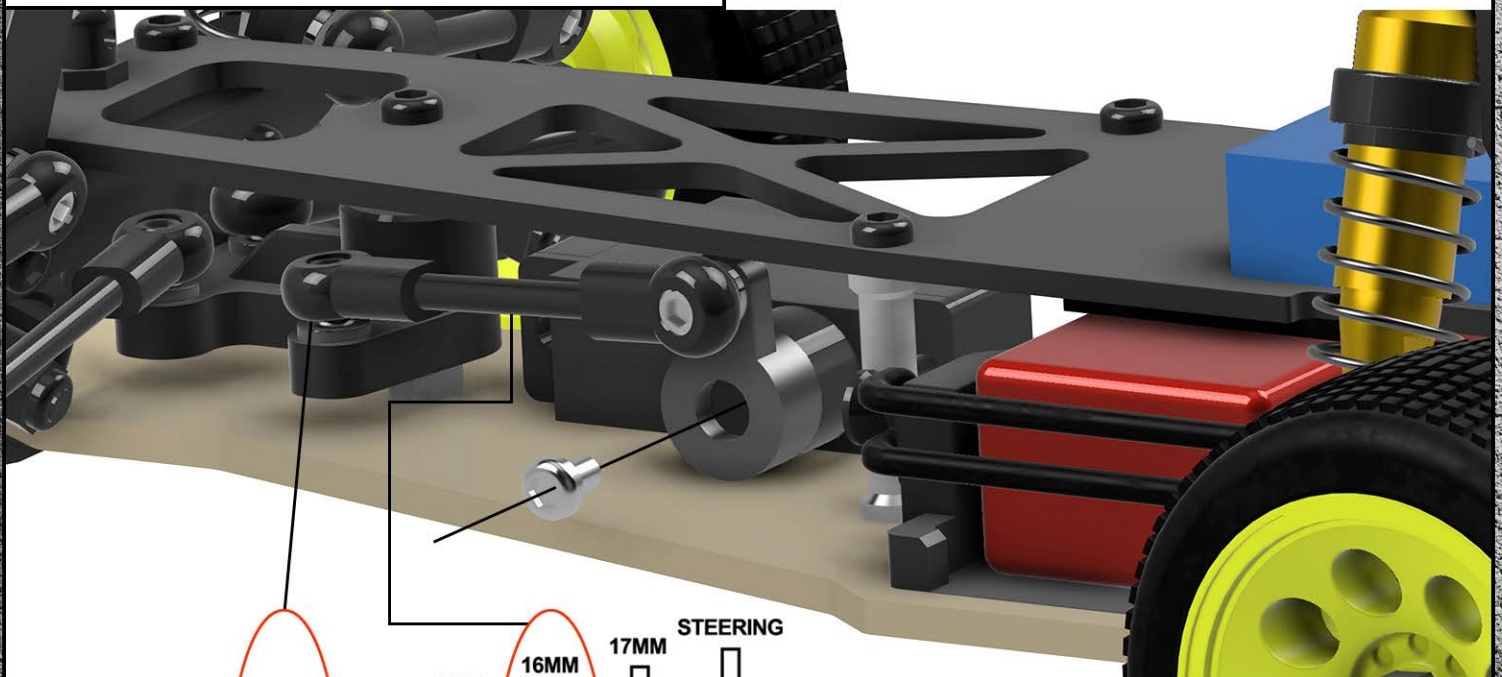
SERVO HORN INCLUDED  
WITH SERVO

CUT SERVO HORN SHORTER

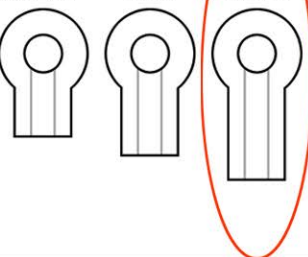
BALLSTUD



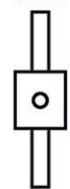
INSTALL SERVO HORN & ATTACH BELLCRANK LINK



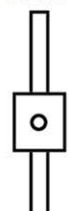
SHORT MED LONG



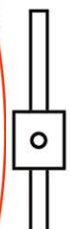
15MM



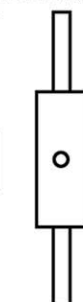
16MM



17MM

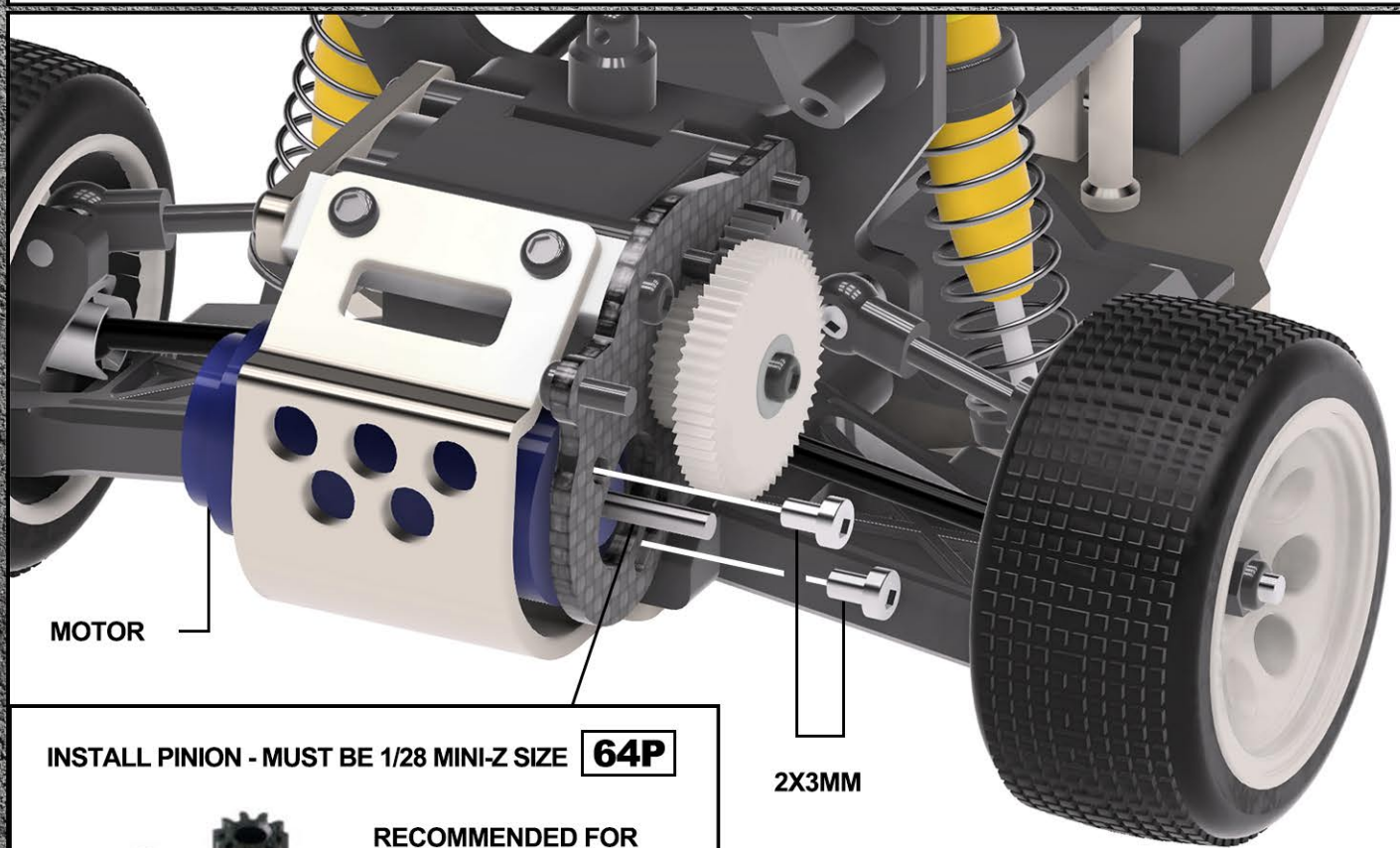
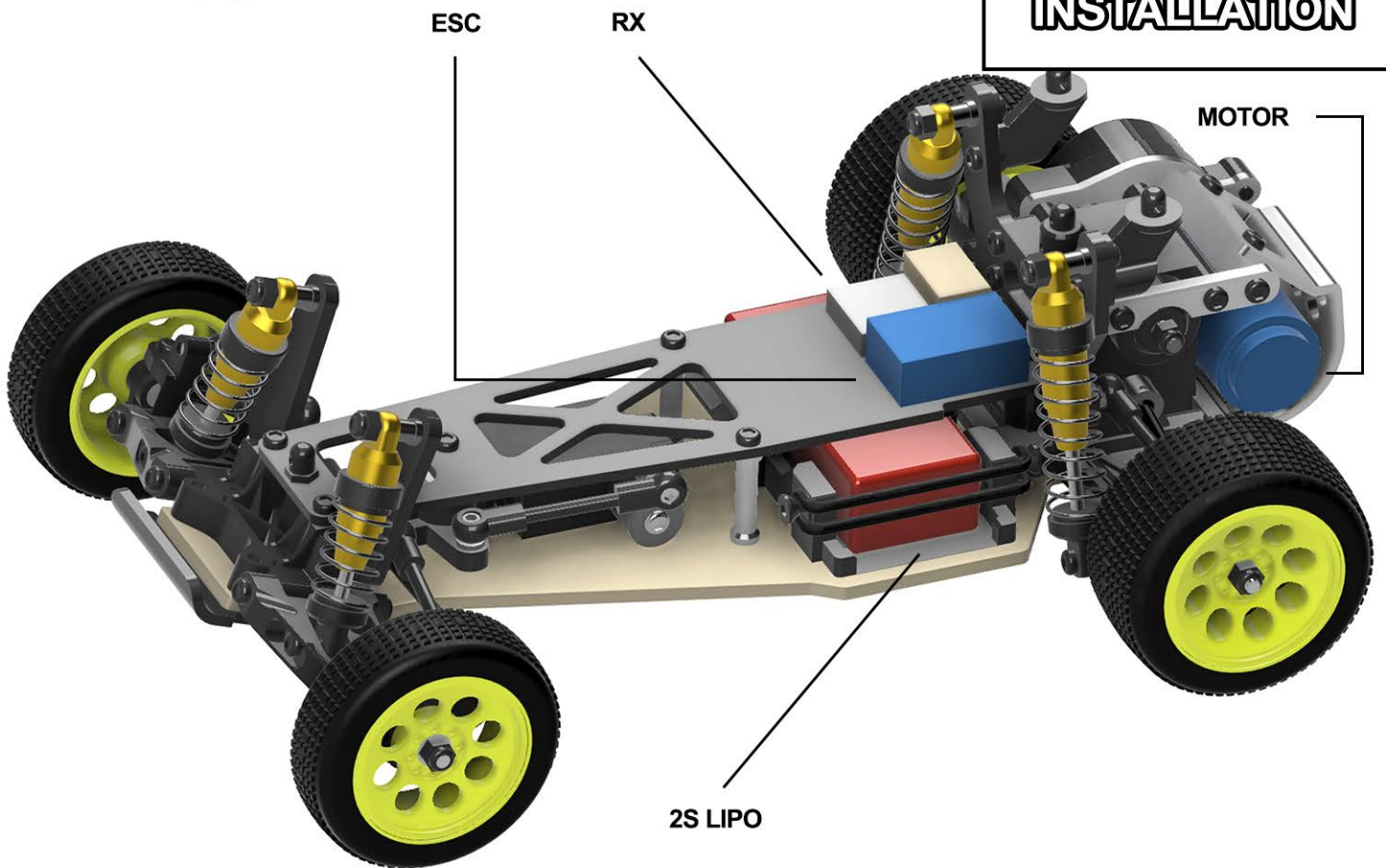


STEERING





## ELECTRONICS INSTALLATION



INSTALL PINION - MUST BE 1/28 MINI-Z SIZE **64P**



RECOMMENDED FOR  
3500KV - 550KV MOTOR-

**12T PINION**

2X3MM



**NRC PROJECTS**



**THANK YOU!**

**ENJOY RACING  
YOUR BUGGY**

**[www.nrcprojects.com](http://www.nrcprojects.com)**